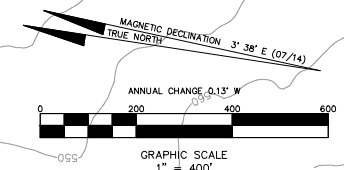


| OBSTACLE FREE ZONE PENETRATIONS |                    |                      |
|---------------------------------|--------------------|----------------------|
| SIG OBJ NO.                     | OBJECT DESCRIPTION | REMEDATION           |
| S01                             | AIRPORT RD         | CLOSE / REROUTE ROAD |
| S02                             | TREE(S)            | REMOVE TREES         |
| S03                             | TREE(S)            | REMOVE TREES         |
| S04                             | TREE(S)            | REMOVE TREES         |



| ALD LEGEND                       |          |          |
|----------------------------------|----------|----------|
| FEATURE                          | EXISTING | ULTIMATE |
| RUNWAY/TAXIWAY OUTLINE           | —        | ---      |
| RUNWAY/TAXIWAY TO BE REMOVED     | —        | ---      |
| BUILDINGS/FACILITIES             | ■        | ■        |
| AIRPORT PROPERTY LINE            | —        | ---      |
| AIRPORT PROPERTY LINE w/FENCE    | —        | ---      |
| FENCE LINE                       | —        | ---      |
| BUILDING RESTRICTION LINE (BRL)  | —        | ---      |
| AIRPORT REFERENCE POINT          | ●        | ●        |
| WIND CONE & SEGMENTED CIRCLE     | ☼        | ☼        |
| THRESHOLD LIGHTS                 | ●●●●     | ●●●●     |
| RW END IDENTIFIER LIGHTS (REILS) | ●        | ●        |
| C&G BEACON                       | ★        | ★        |
| VGSI                             | ■        | ■        |
| HOLD POSITION AND SIGN           | ■        | ■        |
| ASOS/AWOS                        | ■        | ■        |
| PACS AND SACS MARKERS            | ■        | ■        |
| GROUND CONTOURS                  | —        | ---      |
| SIGNIFICANT OBJECT LOCATION      | ●        | ●        |
| TREES/BRUSH                      | ■        | ■        |
| NONDIRECTIONAL BEACON (NDB)      | ●        | ●        |

|  | RW 17-35    |             |
|--|-------------|-------------|
|  | EXISTING    | ULTIMATE    |
| RUNWAY ARC                             | B-1         | B-1         |
| DESIGN AIRCRAFT & ARC                  | CESSNA 421  | CESSNA 421  |
| BALANCED FIELD LENGTH                  | 2323'       | 2323'       |
| RUNWAY LENGTH & WIDTH (ft.)            | 3373' X 45' | 3373' X 60' |
| PAVEMENT DESIGN STRENGTH (1000 lbs.)   | 12 SW       | 30 SW       |
| RUNWAY LIGHTING                        | NONE        | MIRL        |
| PERCENT EFFECTIVE GRADIENT             | 0.44%       | 0.21%       |
| PERCENT WIND COVERAGE                  | 98.52%      | 98.52%      |
| MAXIMUM ELEVATION ABOVE MSL            | 574.10'     | 566.30'     |
| RW SURFACE TYPE                        | ASPH        | ASPH        |
| RSA - LENGTH BEYOND RW END             | 240'        | 240'        |
| RSA - WIDTH                            | 120'        | 120'        |
| OFA - LENGTH BEYOND RW END             | 240'        | 240'        |
| OFA WIDTH                              | 400'        | 400'        |
| OFZ - LENGTH BEYOND RW END             | 200'        | 200'        |
| OFZ WIDTH                              | 250'        | 250'        |
| RUNWAY END                             | 17 35       | 17 35       |
| APPROACH TYPE                          | NDB/GPS     | NDB/GPS     |
| APPROACH VISIBILITY MINIMA             | 1 MILE      | 1 MILE      |
| THRESHOLD SITING SURFACE & SLOPE       | #4 20:1     | #4 20:1     |
| RUNWAY MARKING                         | NPI         | NPI         |
| RUNWAY VISUAL AIDS                     | NONE        | PAPI-2L     |
| TOUCHDOWN ZONE ELEVATION               | 574.10'     | 566.30'     |
| FAR PART 77 APPROACH CATEGORY          | A(NP)       | A(NP)       |
| FAR PART 77 APPROACH SURFACE SLOPE     | 20:1        | 20:1        |
| TAKE-OFF RUN AVAILABLE (TORA)          | 2632'       | 3133'       |
| TAKE-OFF DISTANCE AVAILABLE (TODA)     | 2632'       | 3133'       |
| ACCELERATE STOP DISTANCE AVAIL. (ASDA) | 3133'       | 3133'       |
| LANDING DISTANCE AVAILABLE (LDA)       | 2663'       | 3084'       |

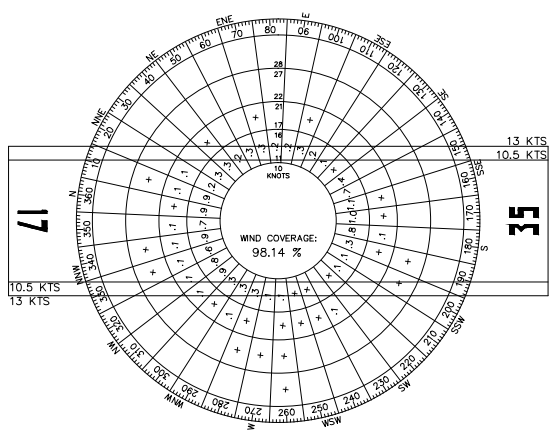
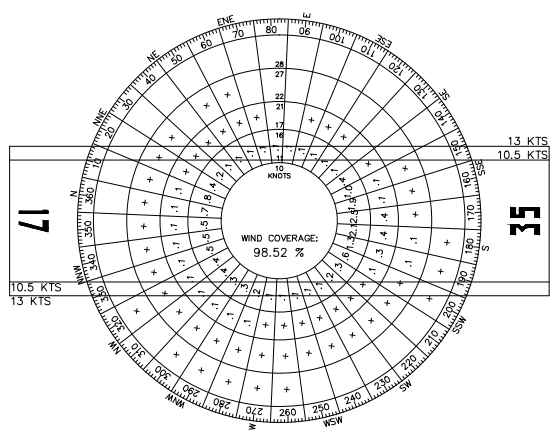
| AIRPORT DATA TABLE                  |                                  |                                  |
|-------------------------------------|----------------------------------|----------------------------------|
|                                     | EXISTING                         | ULTIMATE                         |
| AIRPORT ELEVATION (MSL)             | 574.1'                           | 566.3'                           |
| AIRPORT NAVIGATION AIDS             | NDB, GPS                         | GPS                              |
| MEAN MAX TEMP (HOTTEST MONTH °F)    | 95°F                             | 95°F                             |
| AIRPORT REFERENCE CODE (ARC)        | B-1                              | B-1                              |
| TAXIWAY MARKING                     | STD W/Q REF                      | STD W/Q REF                      |
| TAXIWAY LIGHTING                    | NONE                             | NONE                             |
| AIRPORT REFERENCE POINT COORDINATES | 32°55'50.14" N<br>96°26'07.75" W | 32°55'50.14" N<br>96°26'07.75" W |

NOTES  
 DATUM COORDINATE SYSTEMS - HORIZONTAL DATUM NAD 1983 (STATE PLAN ZONE 3 - TEXAS CENTRAL (PIPS 4203)), VERTICAL DATUM NAVD88.  
 A VERTICALLY-GUIDED SURVEY MEETING ALL THE REQUIREMENTS OF FAA ADVISORY CIRCULARS 150/5300-16, 17, AND 18 WAS NOT COMPLETED AS A PART OF THIS PROJECT.  
 CONTOUR AND BASEMAP DATA RECEIVED FROM THE CITY OF ROCKWALL.

| RUNWAY END COORDINATES AND ELEVATIONS |                |                |           |
|---------------------------------------|----------------|----------------|-----------|
| RUNWAY END                            | LATITUDE       | LONGITUDE      | ELEVATION |
| END OF RWY 17 (E/U)                   | 32°56'06.68" N | 96°26'10.31" W | 559.3'    |
| DISPLACED THRESHOLD OF RWY 17         | 32°56'02.07" N | 96°26'09.59" W | 565.4'    |
| END OF RWY 35 (E/U)                   | 32°55'33.60" N | 96°26'05.12" W | 563.1'    |
| DISPLACED THRESHOLD OF RWY 35         | 32°55'36.44" N | 96°26'05.56" W | 562.7'    |

| AIRFIELD MONUMENTS |      |              |                               |
|--------------------|------|--------------|-------------------------------|
| NO.                | TYPE | DESIGNATION  | LAT. LONG.                    |
| 1                  | PACS | BORNEN       | 32°55'33.75" N 96°26'01.83" W |
| 2                  | SACS | BORNEN       | 32°55'51.90" N 96°26'06.44" W |
| 3                  | SACS | BORNEN AZ MK | 32°55'01.51" N 96°26'08.40" W |

ALL COORDINATES AND ELEVATIONS HORIZONTAL NAD 83, VERTICAL NAVD 88.



| ALL WEATHER WIND ROSE ANALYSIS |                                |                    |                   |
|--------------------------------|--------------------------------|--------------------|-------------------|
| RUNWAY                         | WIND VELOCITY                  | AWWR WIND COVERAGE | IFR WIND COVERAGE |
| 17-35                          | 10.5 KNOTS (ARC A-I AND B-I)   | 97.12%             | 96.43%            |
|                                | 13.0 KNOTS (ARC A-II AND B-II) | 98.52%             | 98.14%            |

WIND SOURCE: NATIONAL CLIMATIC DATA CENTER - COLLIN COUNTY REGIONAL AIRPORT 78,643 OBSERVATIONS, 1998-2008, STATION #72254

TEXAS DEPARTMENT OF TRANSPORTATION  
 AVIATION DIVISION

AIRPORT SPONSOR  
 CURRENT AND FUTURE DEVELOPMENT DEPICTED ON THIS ALP IS APPROVED AND SUPPORTED BY AIRPORT SPONSOR  
 SPONSOR ACKNOWLEDGES APPROVAL OF ALP BY TxDOT DOES NOT CONSTITUTE A COMMITMENT TO FUNDING.

DAVID FULTON, DIRECTOR, AVIATION DIVISION  
 DATE

SIGNATURE  
 DATE

TITLE, AIRPORT SPONSOR'S REPRESENTATIVE

PREPARED BY:  
**GARVER**

3010 GARVER, LLC.  
 3010 GAYLORD PKWY, #190  
 FRISCO, TX 75034  
 (972) 377-7480  
 (972) 377-8380 FAX

PLH  
 DESIGNED BY  
 JAH  
 DRAWN BY

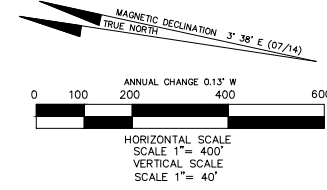
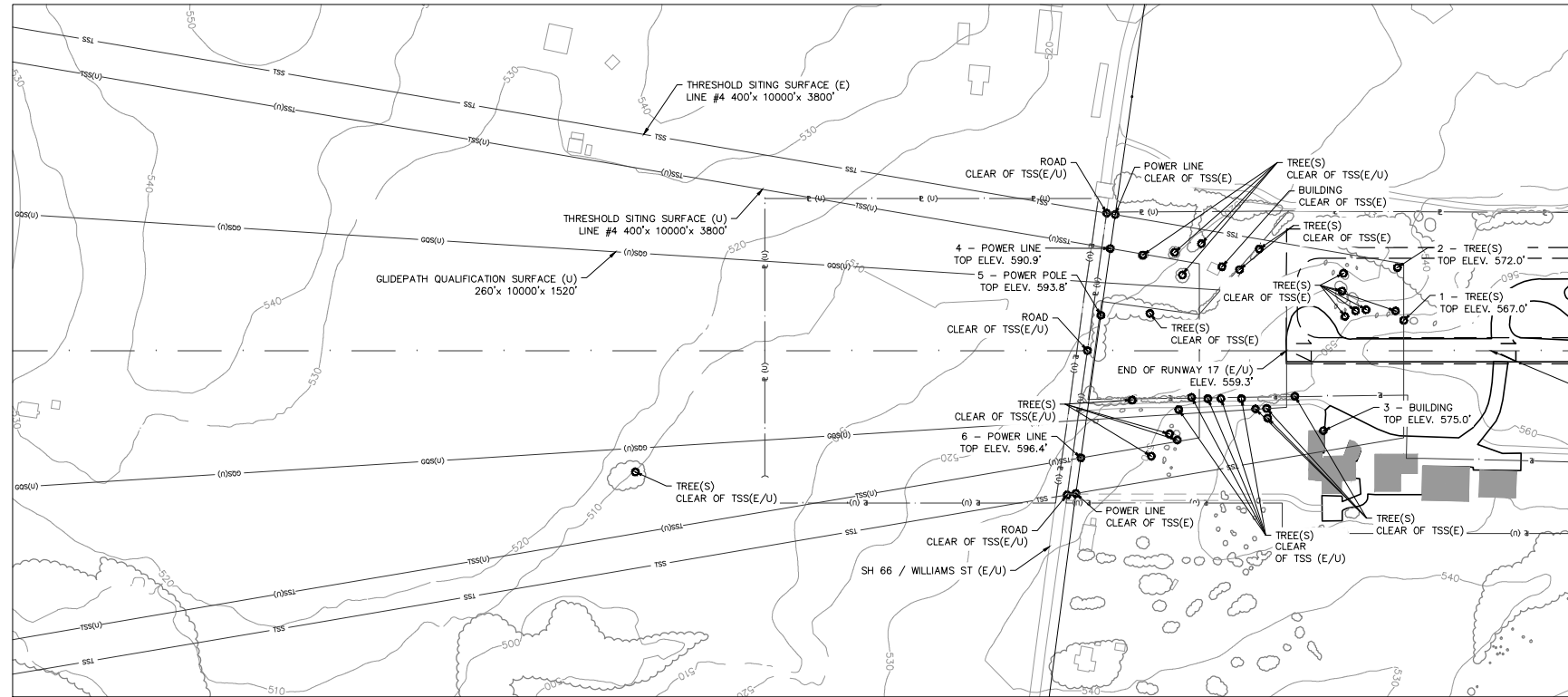
SEPTEMBER 2014  
 DATE

SEPTEMBER 2014  
 DATE

AIRPORT LAYOUT DRAWING  
 RALPH M. HALL MUNICIPAL AIRPORT  
 ROCKWALL, TEXAS (F46)

Aviation Division  
 SHEET 1 OF 6

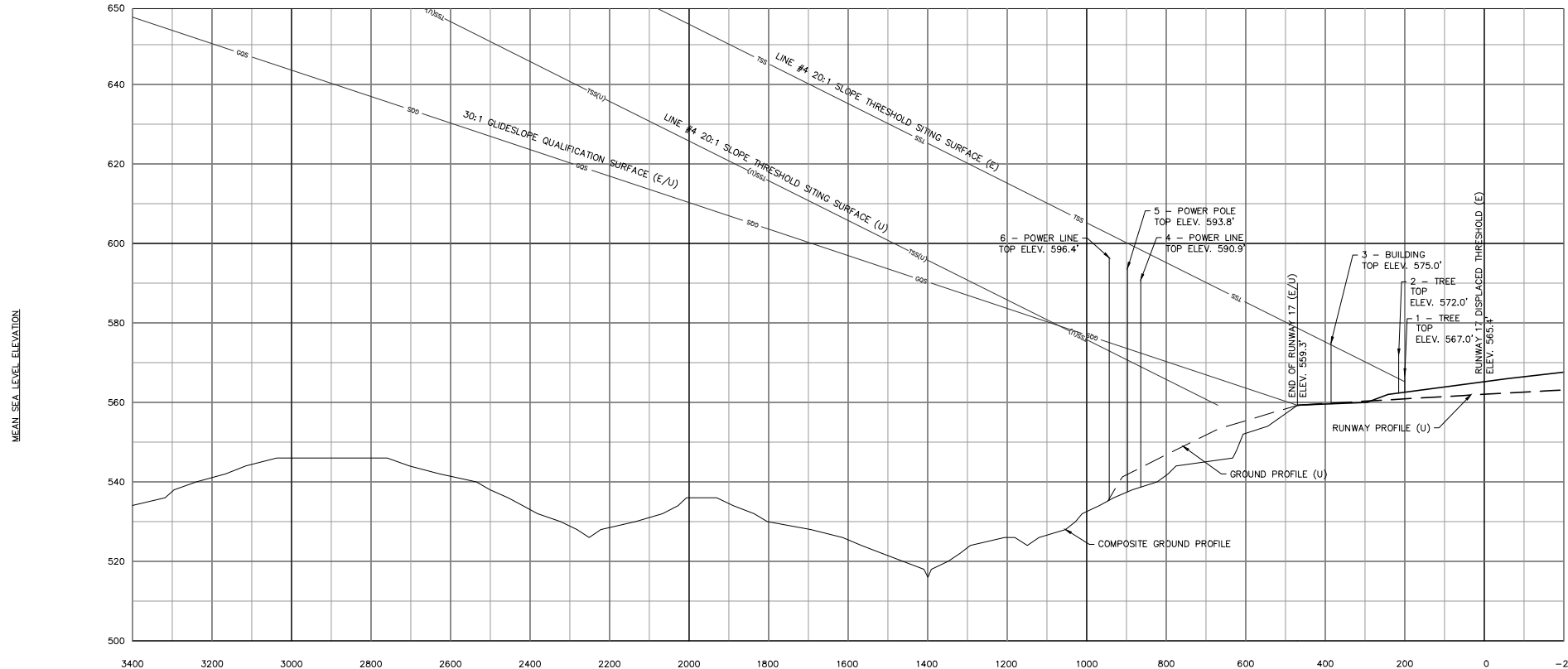
### RUNWAY 17 – PLAN VIEW



| PENETRATIONS TO THRESHOLD SITING SURFACE |                    |              |               |                    |                   |                 |                    |                                    |
|--|--------------------|--------------|---------------|--------------------|-------------------|-----------------|--------------------|------------------------------------|
| NO.                                      | OBJECT DESCRIPTION | LATITUDE (N) | LONGITUDE (W) | DISTANCE FM RW END | OFFSET FM RW C/L* | TOP ELEVATION** | AMT OF PENETRATION | REMEDIATION                        |
| 1  | TREE(S)            | 32°56'04.13" | 96°26'09.09"  | -270'              | 70' L             | 567.0'          | 1.6'               | REMOVE TREE(S)                     |
| 2  | TREE(S)            | 32°56'04.43" | 96°26'07.70"  | -159'              | 92' L             | 572.0'          | 1.1'               | REMOVE TREE(S)                     |
| 3  | BUILDING           | 32°56'05.61" | 96°26'12.32"  | -83'               | 184' R            | 575.0'          | 0.3'               | REMOVE BUILDING                    |
| 4  | POWER LINE         | 32°56'10.96" | 96°26'08.20"  | 405'               | 235' L            | 590.9'          | 21.9' (U)          | BURY / LOWER / REROUTE POWER LINES |
| 5  | POWER POLE         | 32°56'10.98" | 96°26'10.02"  | 427'               | 81' L             | 593.8'          | 23.1' (U)          | BURY / LOWER / REROUTE POWER LINES |
| 6  | POWER LINE         | 32°56'11.00" | 96°26'13.91"  | 473'               | 246' R            | 596.4'          | 23.5' (U)          | BURY / LOWER / REROUTE POWER LINES |

\* OFFSETS FROM CENTERLINE ARE DESCRIBED RIGHT OR LEFT OF THE RUNWAY CENTERLINE AS SEEN BY A PILOT APPROACHING THE RUNWAY TO LAND  
 \*\* ELEVATIONS ADJUSTED UPWARD 15' FOR PUBLIC ROADWAY, 17' FOR INTERSTATE HIGHWAY, 23' FOR RAILROADS  
 NO OBSTRUCTION SURVEY COMPLETED. CONTOUR AND ELEVATION DATA FROM CITY OF ROCKWALL AND OTHER READILY AVAILABLE INFORMATION.

### RUNWAY 17 – PROFILE VIEW



| IPASD LEGEND                     |           |           |
|----------------------------------|-----------|-----------|
| FEATURE                          | EXISTING  | ULTIMATE  |
| RUNWAY/TAXIWAY OUTLINE           | — — — — — | — — — — — |
| RUNWAY/TAXIWAY TO BE REMOVED     | — — — — — | — — — — — |
| BUILDINGS/FACILITIES             | ■         | □         |
| AIRPORT PROPERTY LINE            | — — — — — | — — — — — |
| AIRPORT PROPERTY LINE w/FENCE    | — — — — — | — — — — — |
| THRESHOLD SITING SURFACE         | — — — — — | — — — — — |
| FENCE LINE                       | — — — — — | — — — — — |
| THRESHOLD LIGHTS                 | ● ● ● ● ● | ○ ○ ○ ○ ○ |
| RW END IDENTIFIER LIGHTS (REILS) | ●         | ○         |
| GROUND CONTOURS                  | — — — — — | — — — — — |
| SIGNIFICANT OBJECT PLAN VIEW     | ○         | ○         |
| SIGNIFICANT OBJECT PROFILE VIEW  | —         | —         |
| TREES/BRUSH                      | ○         | ○         |

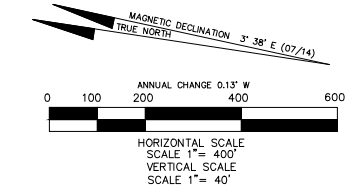
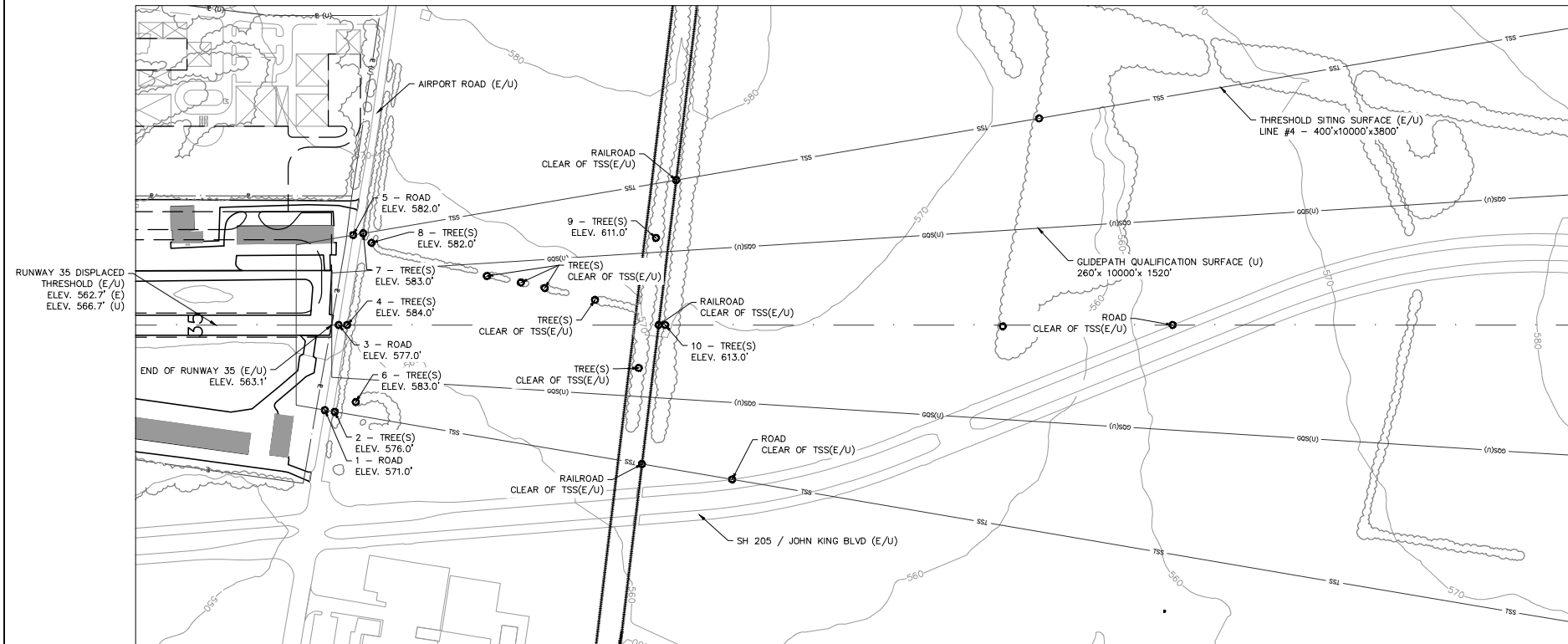
|  |   |
|--|---|
| TEXAS DEPARTMENT OF TRANSPORTATION<br>AVIATION DIVISION<br>ALP APPROVED ACCORDING TO FAA AC 150/5300-13A CHANGE 1 PLUS THE REQUIREMENTS OF A FAVORABLE ENVIRONMENTAL FINDING AND FAA NREA STUDY PRIOR TO THE START OF ANY LAND ACQUISITION OR CONSTRUCTION ON AIRPORT PROPERTY.<br>COPYRIGHT 2014 TXDOT AVIATION DIVISION, ALL RIGHTS RESERVED.<br>DAVID FULTON, DIRECTOR, AVIATION DIVISION | AIRPORT SPONSOR<br>CURRENT AND FUTURE DEVELOPMENT DEPICTED ON THIS ALP IS APPROVED AND SUPPORTED BY AIRPORT SPONSOR<br>SPONSOR ACKNOWLEDGES APPROVAL OF ALP BY TXDOT DOES NOT CONSTITUTE A COMMITMENT TO FUNDING.<br>_____<br>TITLE, AIRPORT SPONSOR'S REPRESENTATIVE |
| DATE   | DATE  |

|   |   |
|---|---|
| PREPARED BY:<br>GARVER, LLC.<br>3010 GAYLORD PKWY, #190<br>FRISCO, TX 75034<br>(972) 377-7480<br>(972) 377-8380 FAX | PLH<br>DESIGNED BY<br>JAH<br>DRAWN BY<br>SEPTEMBER 2014<br>DATE<br>SEPTEMBER 2014<br>DATE |
|---|---|

IPASD RUNWAY 17  
 RALPH M. HALL MUNICIPAL AIRPORT  
 ROCKWALL, TEXAS (F46)

SHEET 2 OF 6

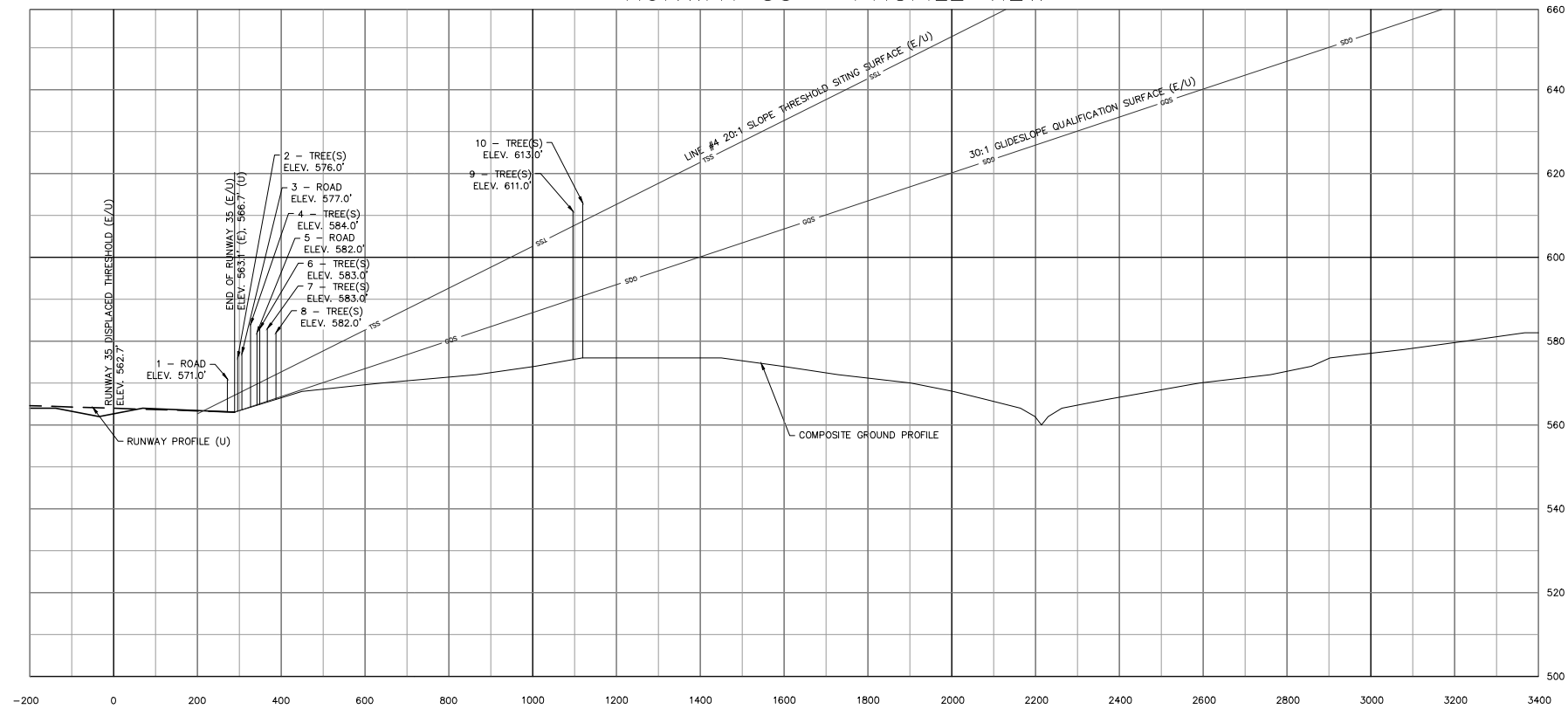
### RUNWAY 35 – PLAN VIEW



| PENETRATIONS TO THRESHOLD SITING SURFACE |                    |              |               |                    |                   |                 |                    |                      |
|--|--------------------|--------------|---------------|--------------------|-------------------|-----------------|--------------------|----------------------|
| NO.                                      | OBJECT DESCRIPTION | LATITUDE (N) | LONGITUDE (W) | DISTANCE FM RW END | OFFSET FM RW C/L* | TOP ELEVATION** | AMT OF PENETRATION | REMEDATION           |
| 1  | AIRPORT RD         | 32°55'33.50" | 96°26'07.61"  | -18'               | 212' L            | 571.0'          | 4.8'               | REMOVE/RELOCATE ROAD |
| 2  | TREE(S)            | 32°55'33.25" | 96°26'07.62"  | 7'                 | 216' L            | 576.0'          | 8.5'               | REMOVE TREE(S)       |
| 3  | AIRPORT RD         | 32°55'33.44" | 96°26'05.09"  | 17'                | C/L               | 577.0'          | 9.0'               | REMOVE/RELOCATE ROAD |
| 4  | TREE(S)            | 32°55'33.23" | 96°26'05.06"  | 38'                | C/L               | 584.0'          | 14.9'              | REMOVE TREE(S)       |
| 5  | AIRPORT RD         | 32°55'33.37" | 96°26'02.43"  | 53'                | 224' R            | 582.0'          | 12.2'              | REMOVE/RELOCATE ROAD |
| 6  | TREE(S)            | 32°55'32.77" | 96°26'07.26"  | 60'                | 192' L            | 583.0'          | 12.8'              | REMOVE TREE(S)       |
| 7  | TREE(S)            | 32°55'33.13" | 96°26'02.34"  | 78'                | 228' R            | 583.0'          | 11.9'              | REMOVE TREE(S)       |
| 8  | TREE(S)            | 32°55'32.90" | 96°26'02.58"  | 99'                | 205' R            | 582.0'          | 9.9'               | REMOVE TREE(S)       |
| 9  | TREE(S)            | 32°55'25.97" | 96°26'01.35"  | 807'               | 217' R            | 611.0'          | 3.5'               | REMOVE TREE(S)       |
| 10                                       | TREE(S)            | 32°55'25.46" | 96°26'03.84"  | 831'               | C/L               | 613.0'          | 4.3'               | REMOVE TREE(S)       |

\* OFFSETS FROM CENTERLINE ARE DESCRIBED RIGHT OR LEFT OF THE RUNWAY CENTERLINE AS SEEN BY A PILOT APPROACHING THE RUNWAY TO LAND  
 \*\* ELEVATIONS ADJUSTED UPWARD 15' FOR PUBLIC ROADWAY, 17' FOR INTERSTATE HIGHWAY, 23' FOR RAILROADS  
 NO OBSTRUCTION SURVEY COMPLETED. CONTOUR AND ELEVATION DATA FROM CITY OF ROCKWALL AND OTHER READILY AVAILABLE INFORMATION.

### RUNWAY 35 – PROFILE VIEW



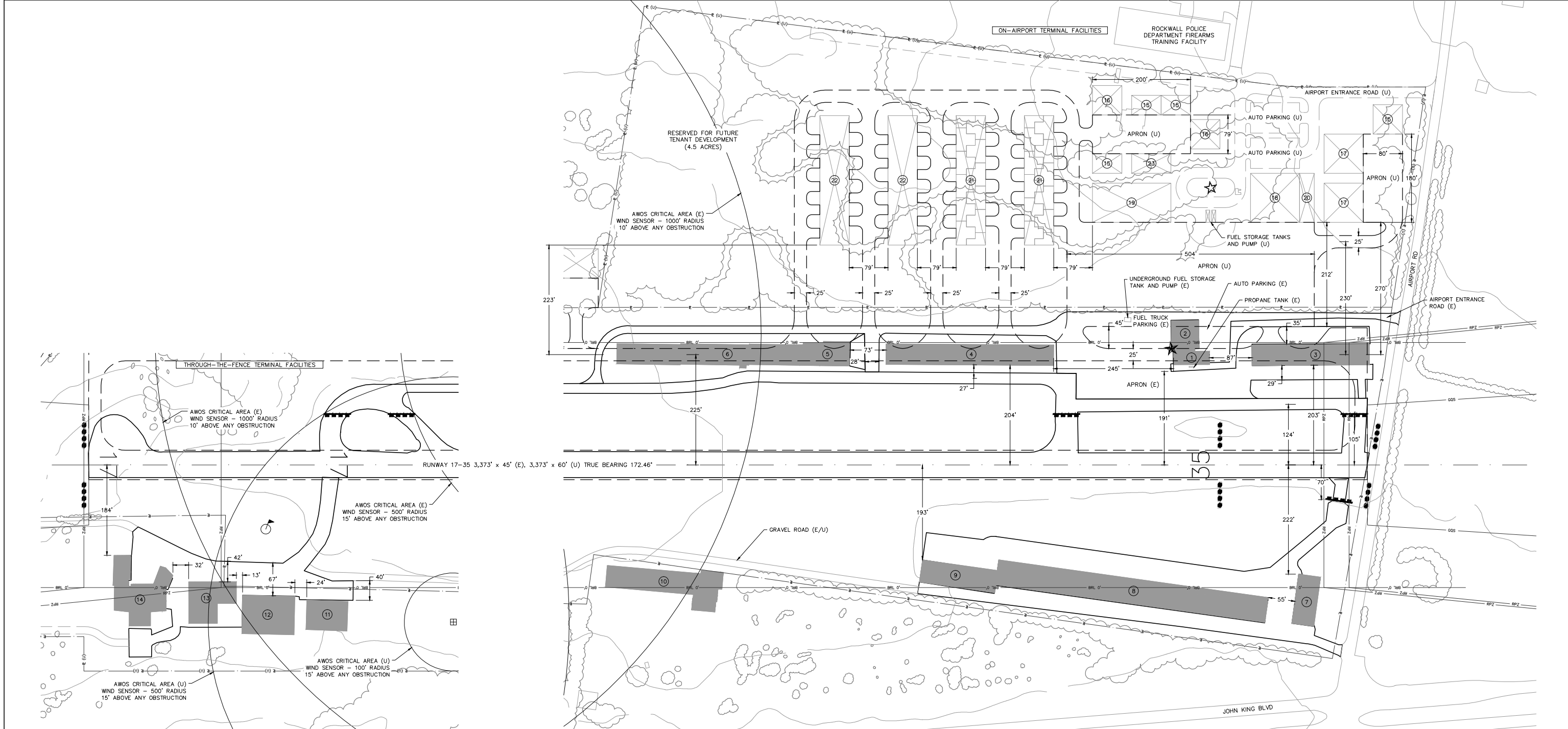
| IPASD LEGEND                     |           |           |
|----------------------------------|-----------|-----------|
| FEATURE                          | EXISTING  | ULTIMATE  |
| RUNWAY/TAXIWAY OUTLINE           | =====     | -----     |
| RUNWAY/TAXIWAY TO BE REMOVED     | =====     | -----     |
| BUILDINGS/FACILITIES             | ■         | ■         |
| AIRPORT PROPERTY LINE            | ---(U)--- | ---(U)--- |
| AIRPORT PROPERTY LINE w/FENCE    | ---(U)--- | ---(U)--- |
| THRESHOLD SITING SURFACE         | ---       | ---       |
| FENCE LINE                       | ---(U)--- | ---(U)--- |
| THRESHOLD LIGHTS                 | ●●●●      | ●●●●      |
| RW END IDENTIFIER LIGHTS (REILS) | ●         | ●         |
| GROUND CONTOURS                  | ~         | ~         |
| SIGNIFICANT OBJECT PLAN VIEW     | ○         | ○         |
| SIGNIFICANT OBJECT PROFILE VIEW  | ⊥         | ⊥         |
| TREES/BRUSH                      | ⊏         | ⊏         |

|   |   |
|---|---|
| TEXAS DEPARTMENT OF TRANSPORTATION<br>AVIATION DIVISION<br>ALP APPROVED ACCORDING TO FAA AC 150/5300-13A CHANGE 1 PLUS THE REQUIREMENTS OF A FAVORABLE ENVIRONMENTAL FINDING AND FAA NEA STUDY PRIOR TO THE START OF ANY LAND ACQUISITION OR CONSTRUCTION ON AIRPORT PROPERTY.<br>COPYRIGHT 2014 TXDOT AVIATION DIVISION, ALL RIGHTS RESERVED.<br>DAVID FILTON, DIRECTOR, AVIATION DIVISION | AIRPORT SPONSOR<br>CURRENT AND FUTURE DEVELOPMENT DEPICTED ON THIS ALP IS APPROVED AND SUPPORTED BY AIRPORT SPONSOR<br>SPONSOR ACKNOWLEDGES APPROVAL OF ALP BY TXDOT DOES NOT CONSTITUTE A COMMITMENT TO FUNDING.<br>SIGNATURE _____ DATE _____<br>TITLE AIRPORT SPONSOR'S REPRESENTATIVE |
|---|---|

|   |   |
|---|---|
| PREPARED BY:<br>GARVER, LLC.<br>3010 GAYLORD PKWY, #190<br>FRISCO, TX 75034<br>(972) 377-7480<br>(972) 377-8380 FAX | PLH DESIGNED BY SEPTEMBER 2014 DATE<br>JAH DRAWN BY SEPTEMBER 2014 DATE |
|---|---|

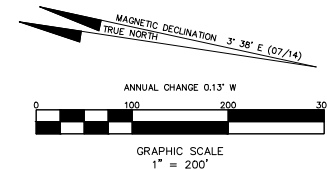
IPASD RUNWAY 35  
 RALPH M. HALL MUNICIPAL AIRPORT  
 ROCKWALL, TEXAS (F46)

Aviation Division  
 SHEET 3 OF 6

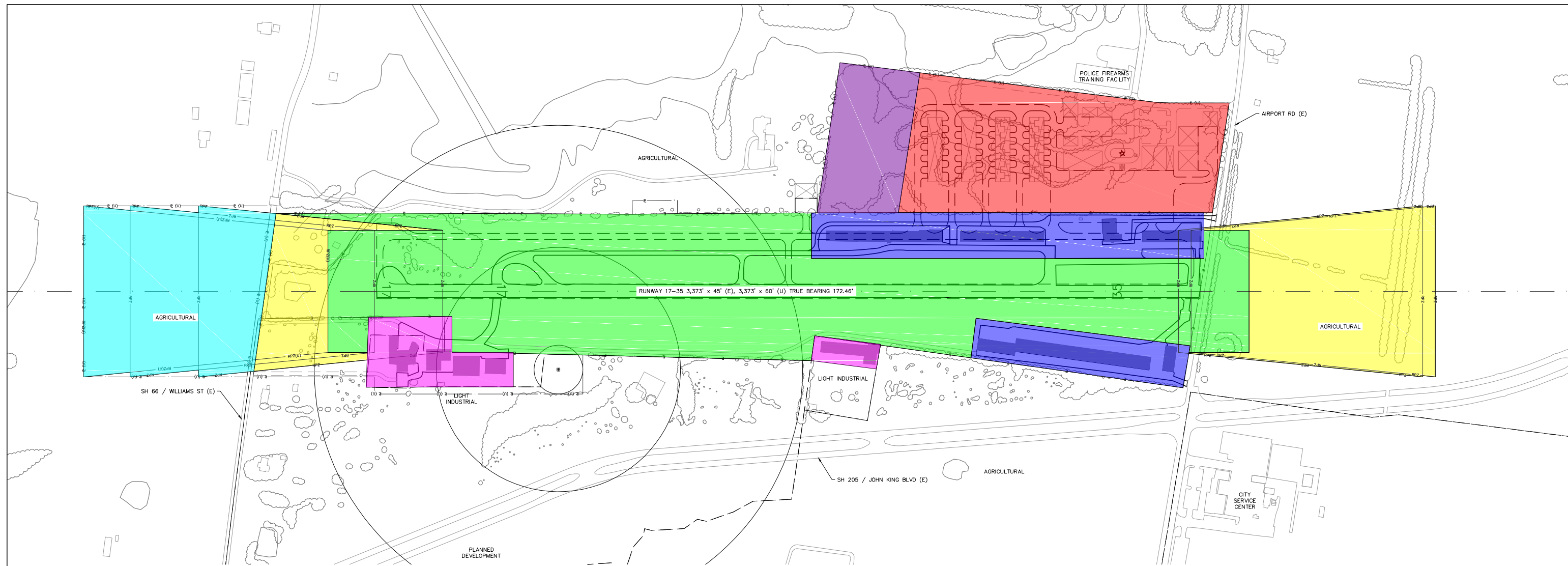


| BUILDING TABLE  |                   |               |        |
|-----------------|-------------------|---------------|--------|
| BUILDING NUMBER | DESCRIPTION       | TOP ELEVATION | STATUS |
| 1*              | TERMINAL BUILDING | -             | -      |
| 2*              | HANGAR            | -             | -      |
| 3*              | HANGAR            | -             | -      |
| 4*              | HANGAR            | -             | -      |
| 5*              | HANGAR            | -             | -      |
| 6*              | HANGAR            | -             | -      |
| 7               | HANGAR            | -             | -      |
| 8               | HANGAR            | -             | -      |
| 9               | HANGAR            | -             | -      |
| 10              | TTF HANGAR        | -             | -      |
| 11              | TTF HANGAR        | -             | -      |
| 12              | TTF HANGAR        | -             | -      |
| 13              | TTF HANGAR        | -             | -      |
| 14              | TTF HANGAR        | -             | -      |
| 15              | -                 | 60'x40'       | HANGAR |
| 16              | -                 | 60'x60'       | HANGAR |
| 17              | -                 | 80'x80'       | HANGAR |
| 18              | -                 | 100'x100'     | HANGAR |
| 19              | -                 | 160'x80'      | HANGAR |
| 20              | -                 | TERMINAL BLDG | -      |
| 21              | -                 | 10-UNIT T-HGR | -      |
| 22              | -                 | SHADE HANGAR  | -      |
| 23              | -                 | 80'x40'       | HANGAR |

| ALD LEGEND                       |          |          |
|----------------------------------|----------|----------|
| FEATURE                          | EXISTING | ULTIMATE |
| RUNWAY/TAXIWAY OUTLINE           | ---      | ---      |
| RUNWAY/TAXIWAY TO BE REMOVED     | ---      | ---      |
| BUILDINGS/FACILITIES             | ■        | ■        |
| AIRPORT PROPERTY LINE            | ---      | ---      |
| AIRPORT PROPERTY LINE w/FENCE    | ---      | ---      |
| FENCE LINE                       | ---      | ---      |
| BUILDING RESTRICTION LINE (BRL)  | ---      | ---      |
| AIRPORT REFERENCE POINT          | ⊕        | ⊕        |
| WIND CONE & SEGMENTED CIRCLE     | ⊙        | ⊙        |
| THRESHOLD LIGHTS                 | ●●●●     | ●●●●     |
| RW END IDENTIFIER LIGHTS (REILS) | ●        | ●        |
| C&G BEACON                       | ★        | ★        |
| VGSI                             | ▲        | ▲        |
| HOLD POSITION AND SIGN           | ■        | ■        |
| ASOS/AWOS                        | ■        | ■        |
| PACS AND SACS MARKERS            | ▽        | ▽        |
| GROUND CONTOURS                  | ---      | ---      |
| SIGNIFICANT OBJECT LOCATION      | ○        | ○        |
| TREES/BRUSH                      | ○        | ○        |
| NONDIRECTIONAL BEACON (NDB)      | ●        | ●        |

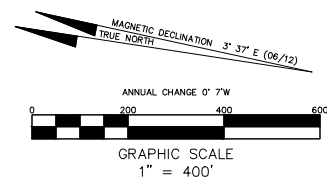


|   |      |   |      |
|---|------|---|------|
| TEXAS DEPARTMENT OF TRANSPORTATION<br>AVIATION DIVISION<br>ALP APPROVED ACCORDING TO FAA AC 150/5300-13A CHANGE 1 PLUS THE REQUIREMENTS OF A FAVORABLE ENVIRONMENTAL FINDING AND FAA NEIA STUDY PRIOR TO THE START OF ANY LAND ACQUISITION OR CONSTRUCTION ON AIRPORT PROPERTY.<br>COPYRIGHT 2014 TXDOT AVIATION DIVISION, ALL RIGHTS RESERVED. |      | AIRPORT SPONSOR<br>CURRENT AND FUTURE DEVELOPMENT DEPICTED ON THIS ALP IS APPROVED AND SUPPORTED BY AIRPORT SPONSOR<br>SPONSOR ACKNOWLEDGES APPROVAL OF ALP BY TXDOT DOES NOT CONSTITUTE A COMMITMENT TO FUNDING. |      |
| DAVID FULTON, DIRECTOR, AVIATION DIVISION   | DATE | SIGNATURE   | DATE |
| PREPARED BY:<br>GARVER, LLC.<br>3010 GAYLORD PKWY, #190<br>FRISCO, TX 75034<br>(972) 377-7480<br>(972) 377-8380 FAX   |      | PLH<br>DESIGNED BY<br>JAH<br>DRAWN BY<br>SEPTEMBER 2014<br>DATE   |      |
| TERMINAL AREA DRAWING<br>RALPH M. HALL MUNICIPAL AIRPORT<br>ROCKWALL, TEXAS (F46)   |      |   |      |
| <br>Aviation Division<br>SHEET 4 OF 6   |      |   |      |



**LEGEND**

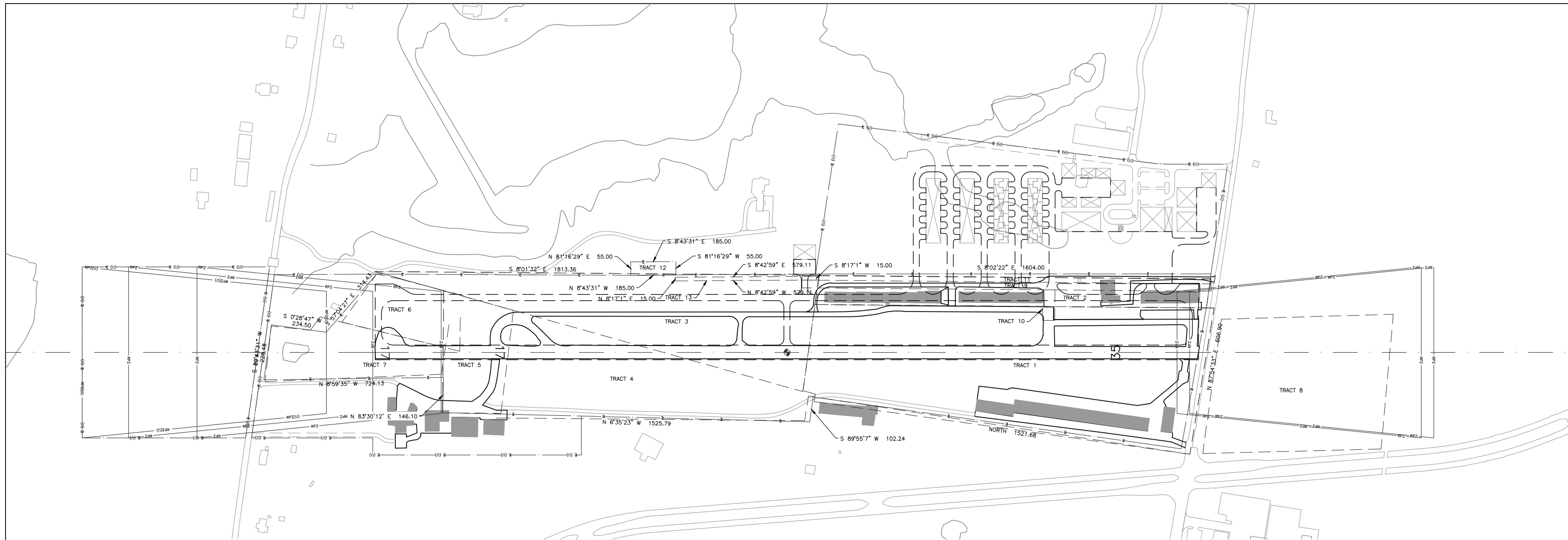
- AIRPORT OPERATIONS PROTECTED AREA
- TERMINAL DEVELOPMENT (E)
- RUNWAY PROTECTION AREA
- TERMINAL DEVELOPMENT (U)
- THROUGH-THE-FENCE HANGAR AREA
- AVIGATION ESEGMENT (U)
- FUTURE TENANT DEVELOPMENT AREA



|  |   |
|--|---|
| <p>TEXAS DEPARTMENT OF TRANSPORTATION<br/>AVIATION DIVISION</p> <p>ALP APPROVED ACCORDING TO FAA AC 150/5300-13A CHANGE 1 PLUS THE REQUIREMENTS OF A FAVORABLE ENVIRONMENTAL FINDING AND FAA NRA STUDY PRIOR TO THE START OF ANY LAND ACQUISITION OR CONSTRUCTION ON AIRPORT PROPERTY.</p> <p>COPYRIGHT 2014 TXDOT AVIATION DIVISION, ALL RIGHTS RESERVED.</p> <p>DAVID FALTON, DIRECTOR, AVIATION DIVISION _____ DATE _____</p> | <p>AIRPORT SPONSOR</p> <p>CURRENT AND FUTURE DEVELOPMENT DEPICTED ON THIS ALP IS APPROVED AND SUPPORTED BY AIRPORT SPONSOR</p> <p>SPONSOR ACKNOWLEDGES APPROVAL OF ALP BY TXDOT DOES NOT CONSTITUTE A COMMITMENT TO FUNDING.</p> <p>_____<br/>SIGNATURE _____ DATE _____</p> <p>TITLE, AIRPORT SPONSOR'S REPRESENTATIVE _____</p> |
| <p>PREPARED BY:</p> <p> <b>GARVER</b></p> <p>GARVER, LLC.<br/>3010 GAYLORD PKWY, #190<br/>FRISCO, TX 75034<br/>(972) 377-7480<br/>(972) 377-8380 FAX</p>   | <p>PLH _____ SEPTEMBER 2014<br/>DESIGNED BY DATE</p> <p>JAH _____ SEPTEMBER 2014<br/>DRAWN BY DATE</p>  |

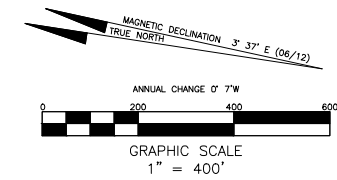
LAND USE DRAWING  
RALPH M. HALL MUNICIPAL AIRPORT  
ROCKWALL, TEXAS (F46)







AIRPORT PROPERTY DATA TABLE

| TRACT | ACRES | TITLE      | GRANTOR/REMARKS                     | COUNTY RECORD VOL./PAGE | DATE     | FUNDING |
|-------|-------|------------|-------------------------------------|-------------------------|----------|---------|
| 1     | 17.99 | FEE SIMPLE | ROY L. COLE                         | VOL. 53 / PG. 47        | 10/20/55 |         |
| 2     | 4.40  | FEE SIMPLE | DALROCK CORPORATION                 | VOL. 169 / PG. 51       | 10/09/67 |         |
| 3     | 9.60  | FEE SIMPLE | ROY L. COLE                         | VOL. 53 / PG. 48        | 10/01/55 |         |
| 4     | 7.76  | FEE SIMPLE | W.L. DUDLEY & CATHERINE DUDLEY      | VOL. 53 / PG. 250       | 1/17/56  |         |
| 5     | 2.84  | FEE SIMPLE | ROY L. COLE                         | VOL. 53 / PG. 48        | 10/20/55 |         |
| 6     | 1.75  | FEE SIMPLE | WILLIAM A. CURFMAN & GLADYS CURFMAN | VOL. 87 / PG. 525       | 4/21/69  |         |
| 7     | 3.70  | FEE SIMPLE | WILLIAM A. CURFMAN & GLADYS CURFMAN | VOL. 87 / PG. 526       | 4/21/69  |         |
| 8     | 9.04  | EASEMENT   | F.B. ATHEY & RUBY ATHEY             | VOL. 87 / PG. 381       | 6/20/69  |         |
| 9     | 1.92  | EASEMENT   | CITY OF ROCKWALL                    | VOL. XX / PG. 627       | 10/09/64 |         |
| 10    | 0.14  | EASEMENT   | CITY OF ROCKWALL                    | VOL. XX / PG. 627       | 10/09/64 |         |
| 11    | 0.77  | EASEMENT   | HAROLD B. YOUNGER & ROBERT H. BURKS | VOL. 71 / PG. 140       | 10/02/64 |         |
| 12    | 0.234 | EASEMENT   | MICHAEL L. PEOPLES                  | VOL. 5118 / PG. 239     | 1/18/11  |         |
| 13    | 0.199 | EASEMENT   | RALPH M. HALL MUNICIPAL AIRPORT     | VOL. 5118 / PG. 239     | 7/20/11  |         |



|  |      |   |  |
|--|------|---|--|
| TEXAS DEPARTMENT OF TRANSPORTATION<br>AVIATION DIVISION<br>ALP APPROVED ACCORDING TO FAA AC 150/5300-13A CHANGE 1 PLUS THE REQUIREMENTS OF A FAVORABLE ENVIRONMENTAL FINDING AND FAA NRA STUDY PRIOR TO THE START OF ANY LAND ACQUISITION OR CONSTRUCTION ON AIRPORT PROPERTY.<br>COPYRIGHT 2014 TXDOT AVIATION DIVISION, ALL RIGHTS RESERVED. |      | AIRPORT SPONSOR<br>CURRENT AND FUTURE DEVELOPMENT DEPICTED ON THIS ALP IS APPROVED AND SUPPORTED BY AIRPORT SPONSOR<br>SPONSOR ACKNOWLEDGES APPROVAL OF ALP BY TXDOT DOES NOT CONSTITUTE A COMMITMENT TO FUNDING. |  |
| DAVID FALTON, DIRECTOR, AVIATION DIVISION  | DATE | SIGNATURE   | DATE   |
| PREPARED BY:<br> GARVER, LLC.<br>3010 GAYLORD PKWY, #190<br>FRISCO, TX 75034<br>(972) 377-7480<br>(972) 377-8380 FAX  |      | PLH DESIGNED BY SEPTEMBER 2014 DATE<br>JAH DRAWN BY SEPTEMBER 2014 DATE   |  |
| PROPERTY MAP<br>RALPH M. HALL MUNICIPAL AIRPORT<br>ROCKWALL, TEXAS (F46)   |      |   |  |
|  |      |   | <br>Aviation Division<br>SHEET 6 OF 6 |