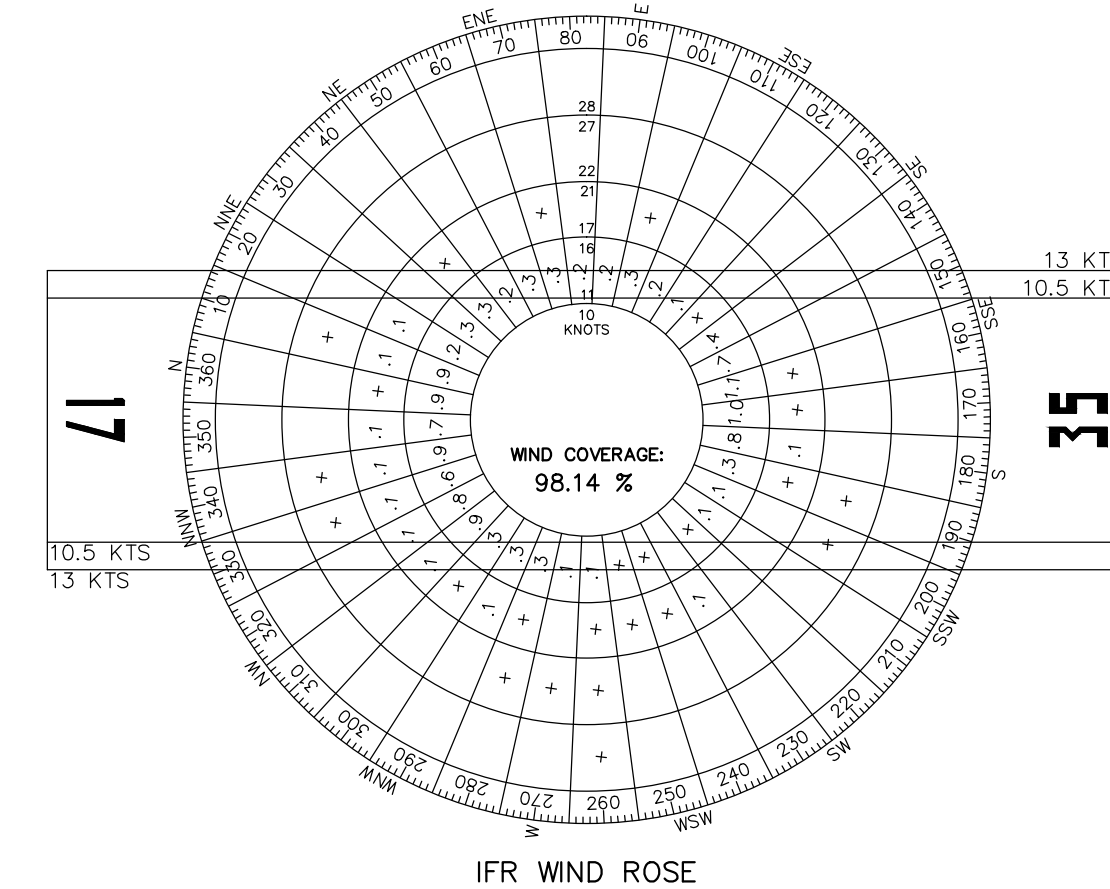
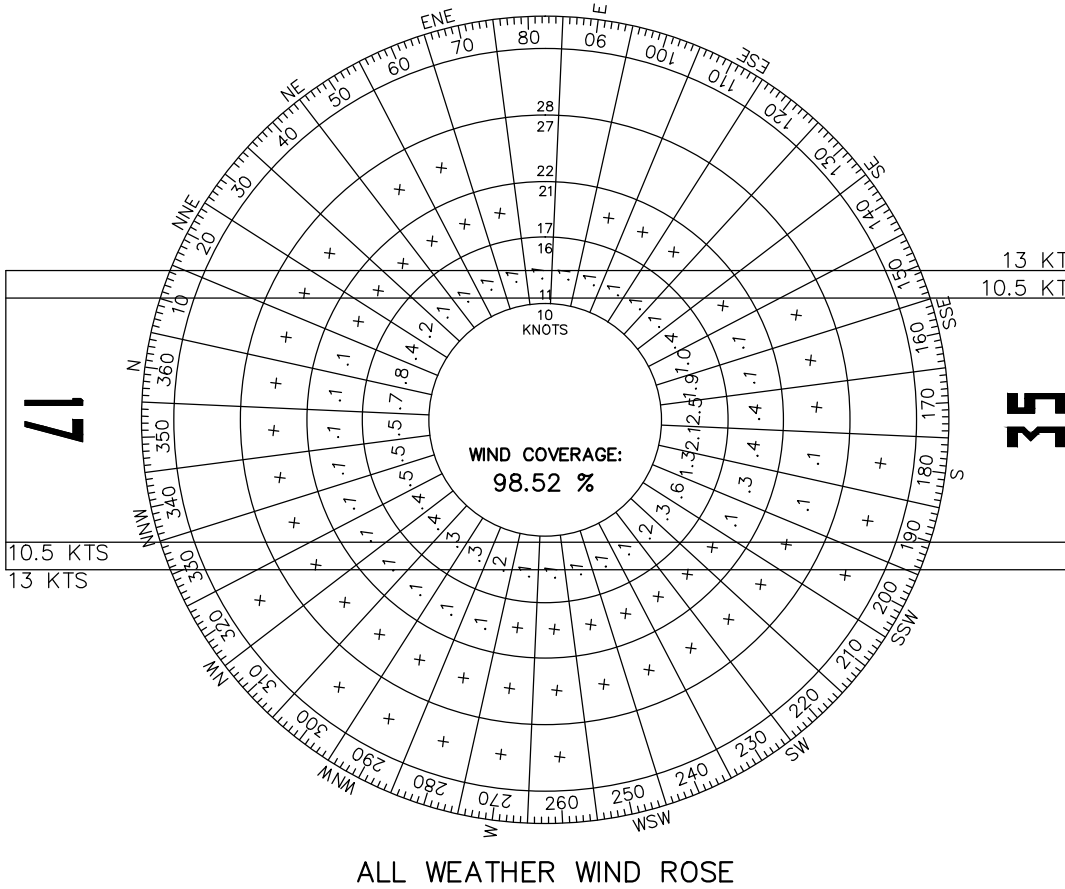


SEE IPASD FOR THRESHOLD SITING SURFACE PENETRATIONS EXISTING/ULTIMATE LINE #4 400'x10000'x3800'

PENETRATIONS ARE ESTIMATES ONLY. NO OBSTRUCTION SURVEY COMPLETED.

SEE IPASD FOR THRESHOLD SITING SURFACE PENETRATIONS EXISTING/ULTIMATE LINE #4 400'x10000'x3800'

PENETRATIONS ARE ESTIMATES ONLY. NO OBSTRUCTION SURVEY COMPLETED.



ALL WEATHER WIND ROSE ANALYSIS			
RUNWAY	WIND VELOCITY	AWWR WIND COVERAGE	IFR WIND COVERAGE
17-35	10.5 KNOTS (ARC A-I AND B-I)	97.12%	96.43%
	13.0 KNOTS (ARC A-II AND B-II)	98.52%	98.14%

WIND SOURCE: NATIONAL CLIMATIC DATA CENTER - COLLIN COUNTY REGIONAL AIRPORT  
78,643 OBSERVATIONS, 1998-2008, STATION #72254

OBSTACLE FREE ZONE PENETRATIONS		
SIG OBJ NO.	OBJECT DESCRIPTION	REMEDATION
S01	AIRPORT RD	CLOSE / REROUTE ROAD
S02	TREE(S)	REMOVE TREES
S03	TREE(S)	REMOVE TREES
S04	TREE(S)	REMOVE TREES

RUNWAY DATA TABLE			
	RW 17-35		
	EXISTING	ULTIMATE	
<b>RUNWAY ARC</b>	B-I	B-I	
DESIGN AIRCRAFT & ARC	CESSNA 421	CESSNA 421	
BALANCED FIELD LENGTH	2323'	2323'	
RUNWAY LENGTH & WIDTH (ft.)	3373' X 45'	3373' X 60'	
PAVEMENT DESIGN STRENGTH (1000 lbs.)	12 SW	30 SW	
RUNWAY LIGHTING	NONE	MIRL	
PERCENT EFFECTIVE GRADIENT	0.44%	0.21%	
PERCENT WIND COVERAGE	98.52%	98.52%	
MAXIMUM ELEVATION ABOVE MSL	574.10'	566.30'	
RW SURFACE TYPE	ASPH	ASPH	
RSA - LENGTH BEYOND RW END	240'	240'	
RSA - WIDTH	120'	120'	
OFA - LENGTH BEYOND RW END	240'	240'	
OFA WIDTH	400'	400'	
OFZ - LENGTH BEYOND RW END	200'	200'	
OFZ WIDTH	250'	250'	
<b>RUNWAY END</b>	17	35	17
APPROACH TYPE	NDB/GPS	NDB/GPS	GPS
APPROACH VISIBILITY MINIMA	1 MILE	1 MILE	1 MILE
THRESHOLD SITING SURFACE & SLOPE	#4 20:1	#4 20:1	#4 20:1
RUNWAY MARKING	NPI	NPI	NPI
RUNWAY VISUAL AIDS	NONE	NONE	PAPI-2L
TOUCHDOWN ZONE ELEVATION	574.10'	574.10'	566.30'
FAR PART 77 APPROACH CATEGORY	A(NP)	A(NP)	A(NP)
FAR PART 77 APPROACH SURFACE SLOPE	20:1	20:1	20:1
TAKE-OFF RUN AVAILABLE (TORA)	2632'	2830'	3133'
TAKE-OFF DISTANCE AVAILABLE (TODA)	2632'	2830'	3133'
ACCELERATE STOP DISTANCE AVAIL. (ASDA)	3133'	3183'	3373'
LANDING DISTANCE AVAILABLE (LDA)	2663'	2894'	3084'

AIRPORT DATA TABLE		
	EXISTING	ULTIMATE
AIRPORT ELEVATION (MSL)	574.1'	566.3'
AIRPORT NAVIGATION AIDS	NDB, GPS	GPS
MEAN MAX TEMP (HOTTEST MONTH °F)	95°F	95°F
AIRPORT REFERENCE CODE (ARC)	B-I	B-I
TAXIWAY MARKING	STD W/Q REF	STD W/Q REF
TAXIWAY LIGHTING	NONE	NONE
AIRPORT REFERENCE POINT COORDINATES	32°55'50.14" N 96°26'07.75" W	32°55'50.14" N 96°26'07.75" W

**NOTES**  
DATUM COORDINATE SYSTEMS - HORIZONTAL DATUM NAD 1983 (STATE PLAN ZONE 3 - TEXAS CENTRAL (FIPS 4203)), VERTICAL DATUM NAVD88.  
A VERTICALLY-GUIDED SURVEY MEETING ALL THE REQUIREMENTS OF FAA ADVISORY CIRCULARS 150/5300-16, 17, AND 18 WAS NOT COMPLETED AS A PART OF THIS PROJECT.  
CONTOUR AND BASEMAP DATA RECEIVED FROM THE CITY OF ROCKWALL.

RUNWAY END COORDINATES AND ELEVATIONS			
RUNWAY END	LATITUDE	LONGITUDE	ELEVATION
END OF RWY 17 (E/U)	32°56'06.68" N	96°26'10.31" W	559.3'
DISPLACED THRESHOLD OF RWY 17	32°56'02.07" N	96°26'09.59" W	565.4'
END OF RWY 35 (E/U)	32°55'33.60" N	96°26'05.12" W	563.1'
DISPLACED THRESHOLD OF RWY 35	32°55'36.44" N	96°26'05.56" W	562.7'

AIRFIELD MONUMENTS			
NO.	TYPE	DESIGNATION	LAT. LONG.
1	PACS	N 1495	32°55'33.75" N 96°26'01.83" W
2	SACS	BOREN	32°55'51.90" N 96°26'06.44" W
3	SACS	BOREN AZ MK	32°56'01.51" N 96°26'08.40" W

ALL COORDINATES AND ELEVATIONS HORIZONTAL NAD 83, VERTICAL NAVD 88.

ALD LEGEND		
FEATURE	EXISTING	ULTIMATE
RUNWAY/TAXIWAY OUTLINE	---	---
RUNWAY/TAXIWAY TO BE REMOVED	---	---
BUILDINGS/FACILITIES	■	■
AIRPORT PROPERTY LINE	---	---
AIRPORT PROPERTY LINE w/FENCE	---	---
FENCE LINE	---	---
BUILDING RESTRICTION LINE (BRL)	---	---
AIRPORT REFERENCE POINT	⊙	⊙
WIND CONE & SEGMENTED CIRCLE	☼	☼
THRESHOLD LIGHTS	••••	••••
RW END IDENTIFIER LIGHTS (REILS)	⊙	⊙
C&G BEACON	★	★
VGSI	⊙	⊙
HOLD POSITION AND SIGN	■	■
ASOS/AWOS	■	■
PACS AND SACS MARKERS	▼	▼
GROUND CONTOURS	---	---
SIGNIFICANT OBJECT LOCATION	⊙	⊙
TREES/BRUSH	○	○
NONDIRECTIONAL BEACON (NDB)	⊙	⊙

TEXAS DEPARTMENT OF TRANSPORTATION  
AVIATION DIVISION

ALP APPROVED ACCORDING TO FAA AC 150/5300-13A CHANGE 1 PLUS THE REQUIREMENTS OF A FAVORABLE ENVIRONMENTAL FINDING AND FAA NFA STUDY PRIOR TO THE START OF ANY LAND ACQUISITION OR CONSTRUCTION ON AIRPORT PROPERTY.

COPYRIGHT 2014 TXDOT AVIATION DIVISION, ALL RIGHTS RESERVED.

DAVID FULTON, DIRECTOR, AVIATION DIVISION

AIRPORT SPONSOR

CURRENT AND FUTURE DEVELOPMENT DEPICTED ON THIS ALP IS APPROVED AND SUPPORTED BY AIRPORT SPONSOR

SPONSOR ACKNOWLEDGES APPROVAL OF ALP BY TXDOT DOES NOT CONSTITUTE A COMMITMENT TO FUNDING.

PREPARED BY: **GARVER, LLC.**  
3010 GAYLORD PKWY, #190  
FRISCO, TX 75034  
(972) 377-7480  
(972) 377-8380 FAX

PLH DESIGNED BY: SEPTEMBER 2014  
DATE

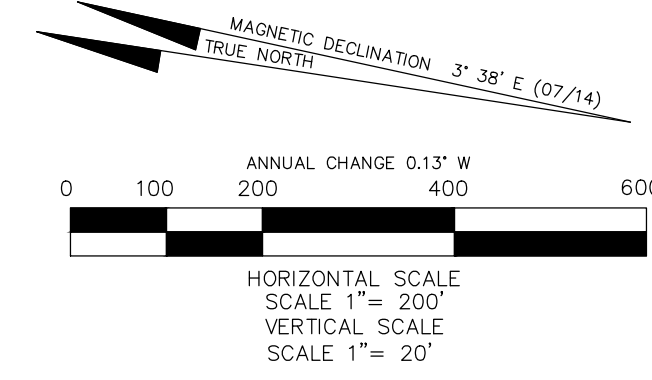
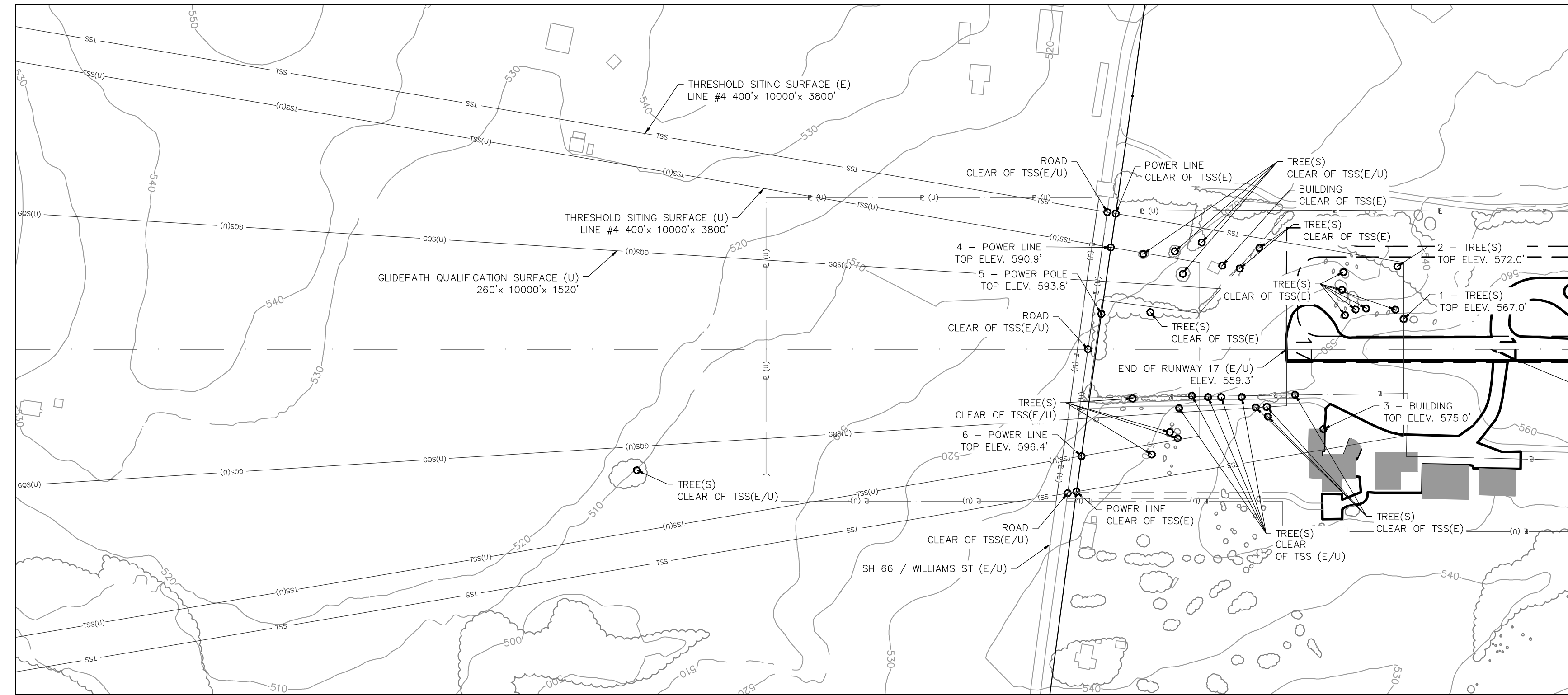
JAH DRAWN BY: SEPTEMBER 2014  
DATE

AIRPORT LAYOUT DRAWING  
RALPH M. HALL MUNICIPAL AIRPORT  
ROCKWALL, TEXAS (F46)

TXDOT  
Aviation Division

SHEET 1 OF 6

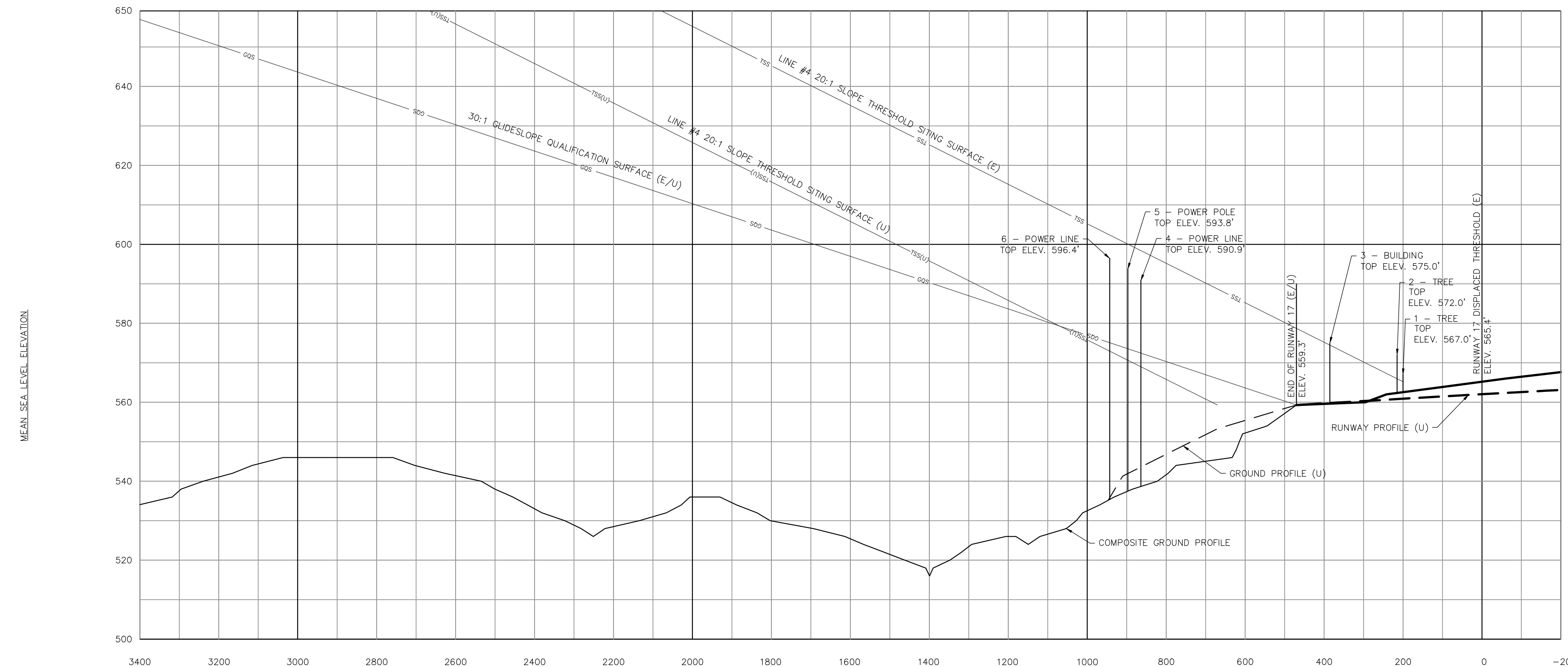
### RUNWAY 17 – PLAN VIEW



PENETRATIONS TO THRESHOLD SITING SURFACE								
NO.	OBJECT DESCRIPTION	LATITUDE (N)	LONGITUDE (W)	DISTANCE FM RW END	OFFSET FM RW C/L*	TOP ELEVATION**	AMT OF PENETRATION	REMEDATION
1	TREE(S)	32°56'04.13"	96°26'09.09"	-270'	70' L	567.0'	1.6'	REMOVE TREE(S)
2	TREE(S)	32°56'04.43"	96°26'07.70"	-159'	92' L	572.0'	1.1'	REMOVE TREE(S)
3	BUILDING	32°56'05.61"	96°26'12.32"	-83'	184' R	575.0'	0.3'	REMOVE BUILDING
4	POWER LINE	32°56'10.96"	96°26'08.20"	405'	235' L	590.9'	21.9' (U)	BURY / LOWER / REROUTE POWER LINES
5	POWER POLE	32°56'10.98"	96°26'10.02"	427'	81' L	593.8'	23.1' (U)	BURY / LOWER / REROUTE POWER LINES
6	POWER LINE	32°56'11.00"	96°26'13.91"	473'	246' R	596.4'	23.5' (U)	BURY / LOWER / REROUTE POWER LINES

\* OFFSETS FROM CENTERLINE ARE DESCRIBED RIGHT OR LEFT OF THE RUNWAY CENTERLINE AS SEEN BY A PILOT APPROACHING THE RUNWAY TO LAND  
 \*\* ELEVATIONS ADJUSTED UPWARD 15' FOR PUBLIC ROADWAY, 17' FOR INTERSTATE HIGHWAY, 23' FOR RAILROADS  
 NO OBSTRUCTION SURVEY COMPLETED. CONTOUR AND ELEVATION DATA FROM CITY OF ROCKWALL AND OTHER READILY AVAILABLE INFORMATION.

### RUNWAY 17 – PROFILE VIEW



IPASD LEGEND		
FEATURE	EXISTING	ULTIMATE
RUNWAY/TAXIWAY OUTLINE	— — — — —	— — — — —
RUNWAY/TAXIWAY TO BE REMOVED	— — — — —	— — — — —
BUILDINGS/FACILITIES	■	■
AIRPORT PROPERTY LINE	— E (U) —	— E (U) —
AIRPORT PROPERTY LINE w/FENCE	— E (U) —	— E (U) —
THRESHOLD SITING SURFACE	— TSS (U) —	— TSS (U) —
FENCE LINE	— — — — —	— — — — —
THRESHOLD LIGHTS	● ● ● ● ●	○ ○ ○ ○ ○
RW END IDENTIFIER LIGHTS (REILS)	●	●
GROUND CONTOURS	~	~
SIGNIFICANT OBJECT PLAN VIEW	○	○
SIGNIFICANT OBJECT PROFILE VIEW	T	T
TREES/BRUSH	⊕	⊕

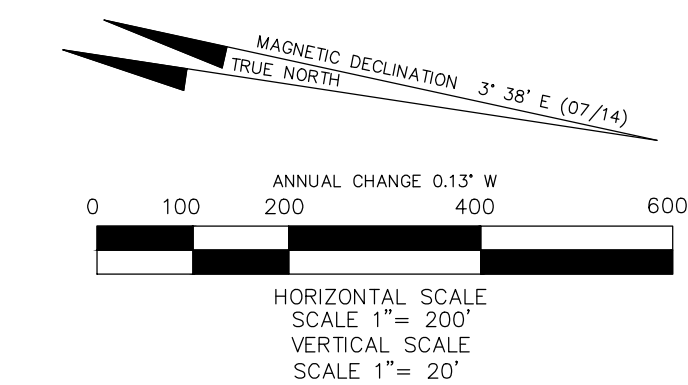
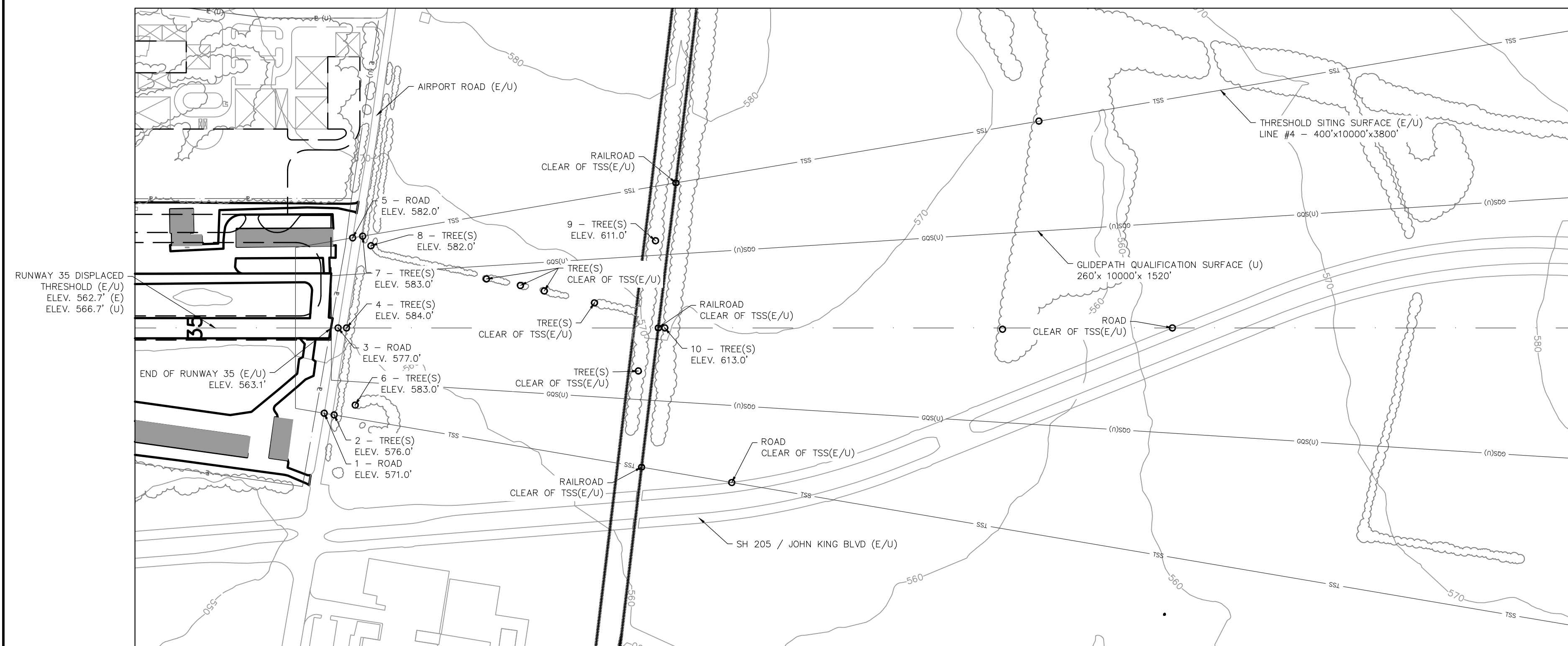
<b>TEXAS DEPARTMENT OF TRANSPORTATION AVIATION DIVISION</b> ALP APPROVED ACCORDING TO FAA AC 150/5300-13A CHANGE 1 PLUS THE REQUIREMENTS OF A FAVORABLE ENVIRONMENTAL FINDING AND FAA NFA STUDY PRIOR TO THE START OF ANY LAND ACQUISITION OR CONSTRUCTION ON AIRPORT PROPERTY. COPYRIGHT 2014 TXDOT AVIATION DIVISION, ALL RIGHTS RESERVED. DAVID FULTON, DIRECTOR, AVIATION DIVISION	<b>AIRPORT SPONSOR</b> CURRENT AND FUTURE DEVELOPMENT DEPICTED ON THIS ALP IS APPROVED AND SUPPORTED BY AIRPORT SPONSOR. SPONSOR ACKNOWLEDGES APPROVAL OF ALP BY TXDOT DOES NOT CONSTITUTE A COMMITMENT TO FUNDING. TITLE, AIRPORT SPONSOR'S REPRESENTATIVE
---	--

PREPARED BY: <b>GARVER</b> 3010 GAYLORD PKWY, #190 FRISCO, TX 75034 (972) 377-7480 (972) 377-8380 FAX	PLH DESIGNED BY: SEPTEMBER 2014 DATE JAH DRAWN BY: SEPTEMBER 2014 DATE
--	---

**IPASD RUNWAY 17**  
**RALPH M. HALL MUNICIPAL AIRPORT**  
**ROCKWALL, TEXAS (F46)**

SHEET 2 OF 6

### RUNWAY 35 – PLAN VIEW

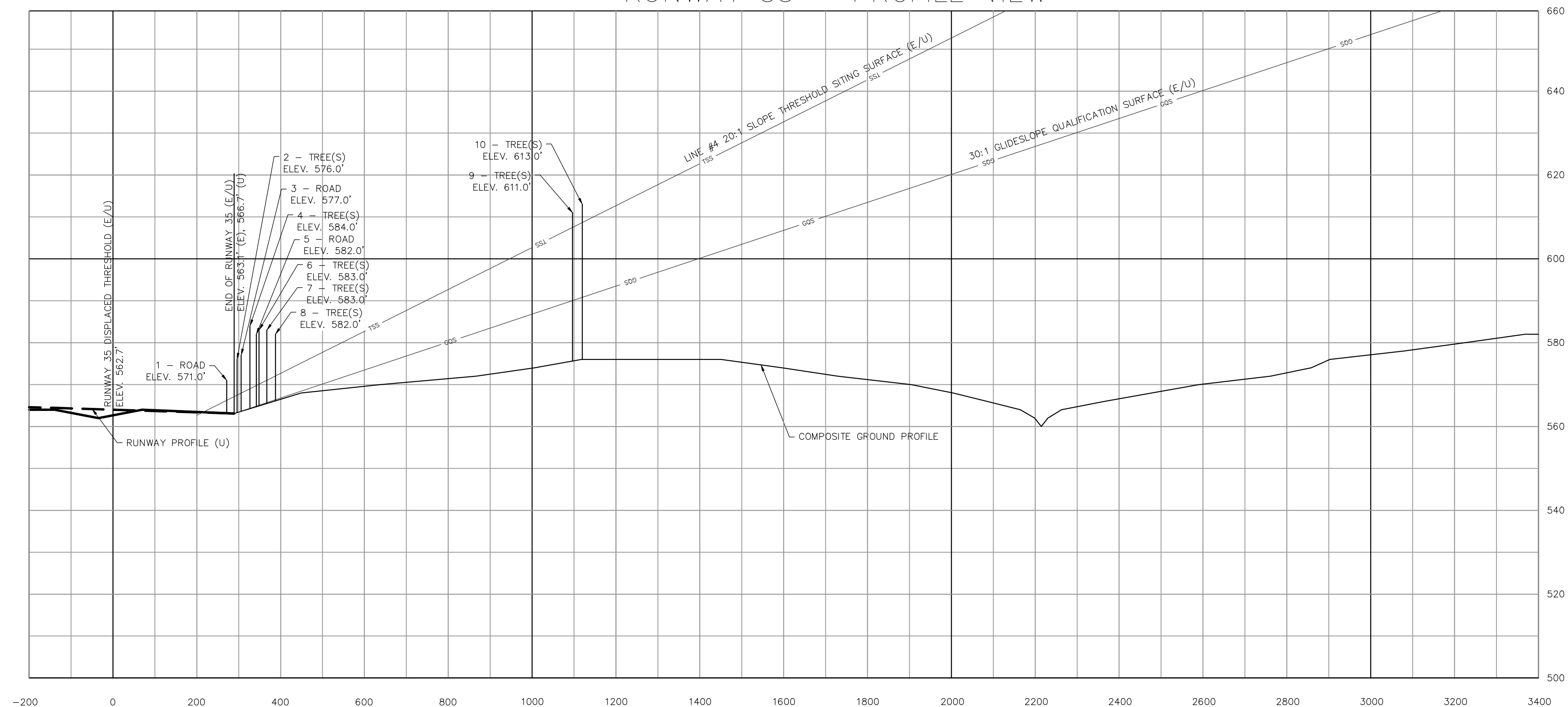


PENETRATIONS TO THRESHOLD SITING SURFACE									
NO.	OBJECT DESCRIPTION	LATITUDE (N)	LONGITUDE (W)	DISTANCE FM RW END	OFFSET FM RW C/L*	TOP ELEVATION**	AMT OF PENETRATION	REMEDATION	
1	AIRPORT RD	32°55'33.50"	96°26'07.61"	-18'	212' L	571.0'	4.8'	REMOVE/RELOCATE ROAD	
2	TREE(S)	32°55'33.25"	96°26'07.62"	7'	216' L	576.0'	8.5'	REMOVE TREE(S)	
3	AIRPORT RD	32°55'33.44"	96°26'05.09"	17'	C/L	577.0'	9.0'	REMOVE/RELOCATE ROAD	
4	TREE(S)	32°55'33.23"	96°26'05.06"	38'	C/L	584.0'	14.9'	REMOVE TREE(S)	
5	AIRPORT RD	32°55'33.37"	96°26'02.43"	53'	224' R	582.0'	12.2'	REMOVE/RELOCATE ROAD	
6	TREE(S)	32°55'32.77"	96°26'07.26"	60'	192' L	583.0'	12.8'	REMOVE TREE(S)	
7	TREE(S)	32°55'33.13"	96°26'02.34"	78'	228' R	583.0'	11.9'	REMOVE TREE(S)	
8	TREE(S)	32°55'32.90"	96°26'02.58"	99'	205' R	582.0'	9.9'	REMOVE TREE(S)	
9	TREE(S)	32°55'25.97"	96°26'01.35"	807'	217' R	611.0'	3.5'	REMOVE TREE(S)	
10	TREE(S)	32°55'25.46"	96°26'03.84"	831'	C/L	613.0'	4.3'	REMOVE TREE(S)	

\* OFFSETS FROM CENTERLINE ARE DESCRIBED RIGHT OR LEFT OF THE RUNWAY CENTERLINE AS SEEN BY A PILOT APPROACHING THE RUNWAY TO LAND  
 \*\* ELEVATIONS ADJUSTED UPWARD 15' FOR PUBLIC ROADWAY, 17' FOR INTERSTATE HIGHWAY, 23' FOR RAILROADS

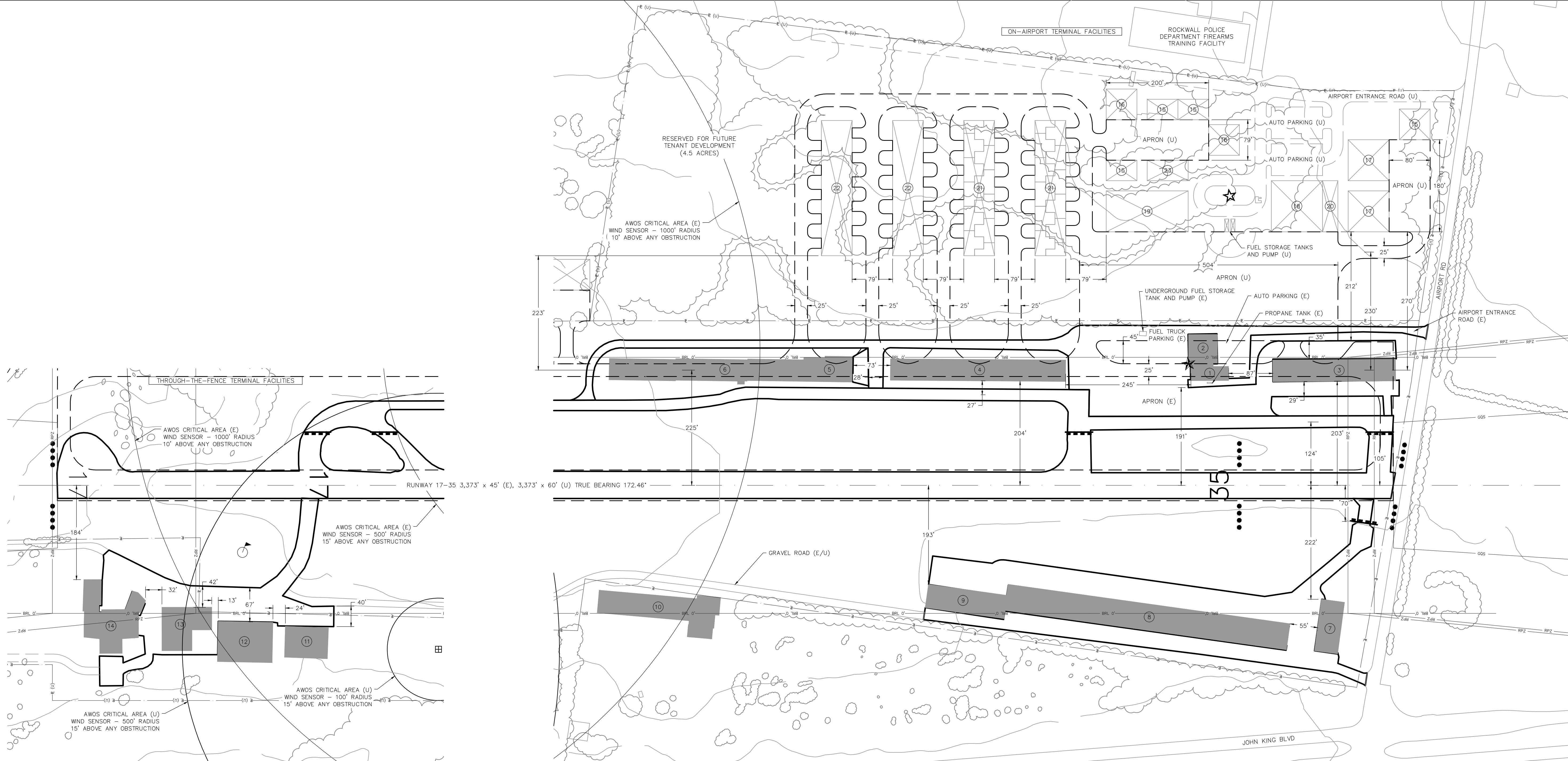
NO OBSTRUCTION SURVEY COMPLETED. CONTOUR AND ELEVATION DATA FROM CITY OF ROCKWALL AND OTHER READILY AVAILABLE INFORMATION.

### RUNWAY 35 – PROFILE VIEW



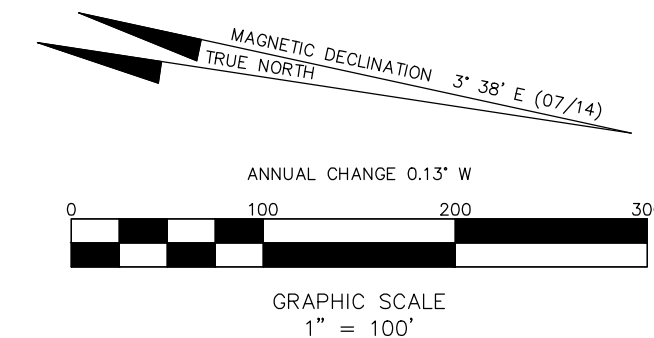
IPASD LEGEND		
FEATURE	EXISTING	ULTIMATE
RUNWAY/TAXIWAY OUTLINE	— — — — —	— — — — —
RUNWAY/TAXIWAY TO BE REMOVED	— — — — —	— — — — —
BUILDINGS/FACILITIES	■	■
AIRPORT PROPERTY LINE	— (U) —	— (U) —
AIRPORT PROPERTY LINE w/FENCE	— (U) —	— (U) —
THRESHOLD SITING SURFACE	— TSS (U) —	— TSS (U) —
FENCE LINE	— — — — —	— — — — —
THRESHOLD LIGHTS	● ● ● ● ●	● ● ● ● ●
RW END IDENTIFIER LIGHTS (REILS)	●	●
GROUND CONTOURS	— — — — —	— — — — —
SIGNIFICANT OBJECT PLAN VIEW	○	○
SIGNIFICANT OBJECT PROFILE VIEW	⊥	⊥
TREES/BRUSH	⊕	⊕

<p><b>TEXAS DEPARTMENT OF TRANSPORTATION AVIATION DIVISION</b></p> <p>ALP APPROVED ACCORDING TO FAA AC 150/5300-13A CHANGE 1 PLUS THE REQUIREMENTS OF A FAVORABLE ENVIRONMENTAL FINDING AND FAA NEA STUDY PRIOR TO THE START OF ANY LAND ACQUISITION OR CONSTRUCTION ON AIRPORT PROPERTY.</p> <p>COPYRIGHT 2014 TXDOT AVIATION DIVISION, ALL RIGHTS RESERVED.</p> <p>DAVID FULTON, DIRECTOR, AVIATION DIVISION</p>	<p><b>AIRPORT SPONSOR</b></p> <p>CURRENT AND FUTURE DEVELOPMENT DEPICTED ON THIS ALP IS APPROVED AND SUPPORTED BY AIRPORT SPONSOR</p> <p>SPONSOR ACKNOWLEDGES APPROVAL OF ALP BY TXDOT DOES NOT CONSTITUTE A COMMITMENT TO FUNDING.</p>
	<p>DATE</p> <p>SIGNATURE</p> <p>TITLE, AIRPORT SPONSOR'S REPRESENTATIVE</p>
<p>PREPARED BY:</p> <p><b>GARVER</b></p> <p>GARVER, LLC.                  3010 GAYLORD PKWY, #190                  FRISCO, TX 75034                  (972) 377-7480                  (972) 377-8380 FAX</p>	<p>PLH DESIGNED BY DATE SEPTEMBER 2014</p> <p>JAH DRAWN BY DATE SEPTEMBER 2014</p>
<p>IPASD RUNWAY 35                  RALPH M. HALL MUNICIPAL AIRPORT                  ROCKWALL, TEXAS (F46)</p>	
<p>Aviation Division</p>	

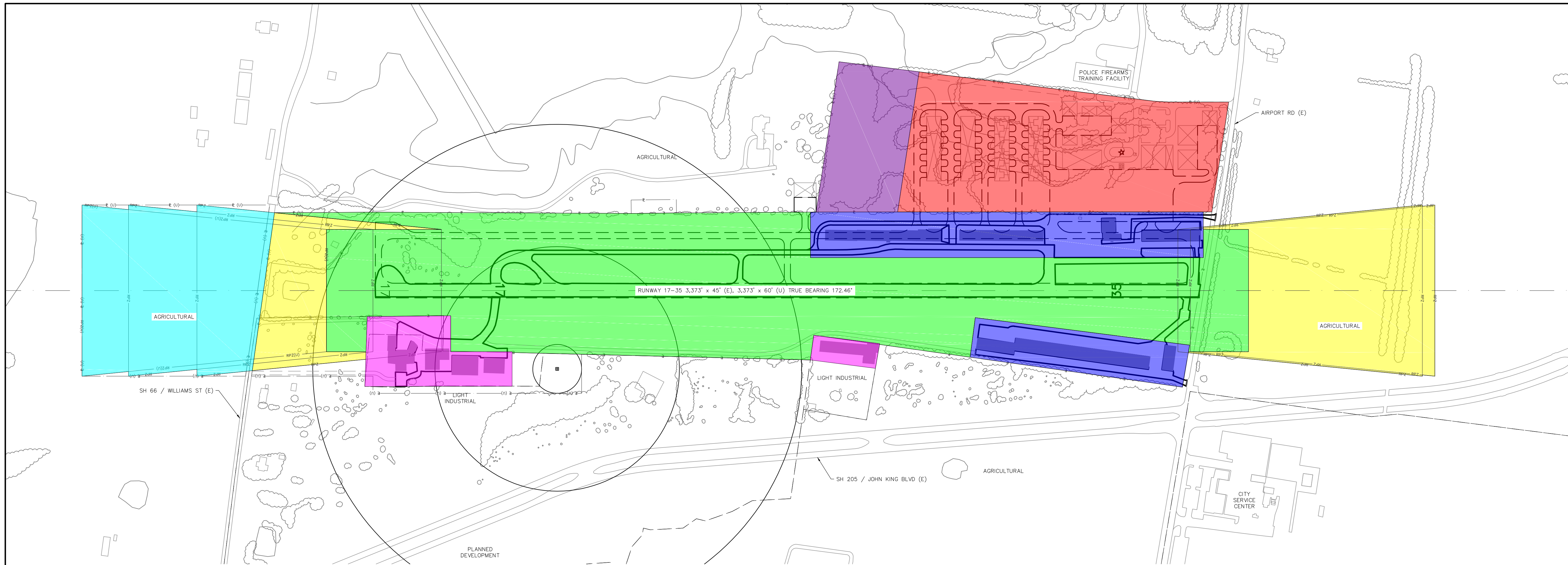


BUILDING TABLE			
BUILDING NUMBER	DESCRIPTION	TOP ELEVATION	STATUS
1*	TERMINAL BUILDING	-	-
2*	HANGAR	-	-
3*	HANGAR	-	-
4*	HANGAR	-	-
5*	HANGAR	-	-
6*	HANGAR	-	-
7	HANGAR	-	-
8	HANGAR	-	-
9	HANGAR	-	-
10	TTF HANGAR	-	-
11	TTF HANGAR	-	-
12	TTF HANGAR	-	-
13	TTF HANGAR	-	-
14	TTF HANGAR	-	-
15	-	60'x40' HANGAR	-
16	-	60'x60' HANGAR	-
17	-	80'x80' HANGAR	-
18	-	100'x100' HANGAR	-
19	-	160'x80' HANGAR	-
20	-	TERMINAL BLDG	-
21	-	10-UNIT T-HGR	-
22	-	SHADE HANGAR	-
23	-	80'x40' HANGAR	-

ALD LEGEND		
FEATURE	EXISTING	ULTIMATE
RUNWAY/TAXIWAY OUTLINE	—	—
RUNWAY/TAXIWAY TO BE REMOVED	—	—
BUILDINGS/FACILITIES	■	■
AIRPORT PROPERTY LINE	—	—
AIRPORT PROPERTY LINE w/FENCE	—	—
FENCE LINE	—	—
BUILDING RESTRICTION LINE (BRL)	—	—
AIRPORT REFERENCE POINT	⊕	⊕
WIND CONE & SEGMENTED CIRCLE	⊙	⊙
THRESHOLD LIGHTS	●●●●	○○○○
RW END IDENTIFIER LIGHTS (REILS)	⊙	⊙
C&G BEACON	★	★
VGSI	■	■
HOLD POSITION AND SIGN	■	■
ASOS/AWOS	■	■
PACS AND SACS MARKERS	▽	▽
GROUND CONTOURS	—	—
SIGNIFICANT OBJECT LOCATION	○	○
TREES/BRUSH	○	○
NONDIRECTIONAL BEACON (NDB)	●	●

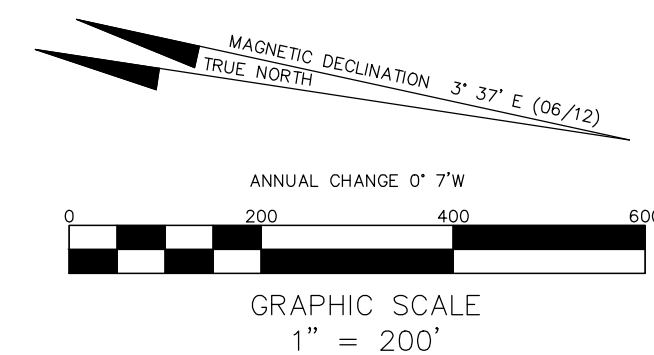


<b>TEXAS DEPARTMENT OF TRANSPORTATION</b> AVIATION DIVISION ALP APPROVED ACCORDING TO FAA AC 150/5300-13A CHANGE 1 PLUS THE REQUIREMENTS OF A FAVORABLE ENVIRONMENTAL FINDING AND FAA NEA STUDY PRIOR TO THE START OF ANY LAND ACQUISITION OR CONSTRUCTION ON AIRPORT PROPERTY. COPYRIGHT 2014 TxDOT AVIATION DIVISION, ALL RIGHTS RESERVED.		<b>AIRPORT SPONSOR</b> CURRENT AND FUTURE DEVELOPMENT DEPICTED ON THIS ALP IS APPROVED AND SUPPORTED BY AIRPORT SPONSOR. SPONSOR ACKNOWLEDGES APPROVAL OF ALP BY TxDOT DOES NOT CONSTITUTE A COMMITMENT TO FUNDING.	
DAVID FULTON, DIRECTOR, AVIATION DIVISION	DATE	SIGNATURE	DATE
PREPARED BY: <b>GARVER, LLC.</b> 3010 GAYLORD PKWY, #190 FRISCO, TX 75034 (972) 377-7480 (972) 377-8380 FAX		PLH DESIGNED BY JAH DRAWN BY SEPTEMBER 2014 DATE	
<b>TERMINAL AREA DRAWING</b> <b>RALPH M. HALL MUNICIPAL AIRPORT</b> <b>ROCKWALL, TEXAS (F46)</b>			
 SHEET 4 OF 6			



**LEGEND**

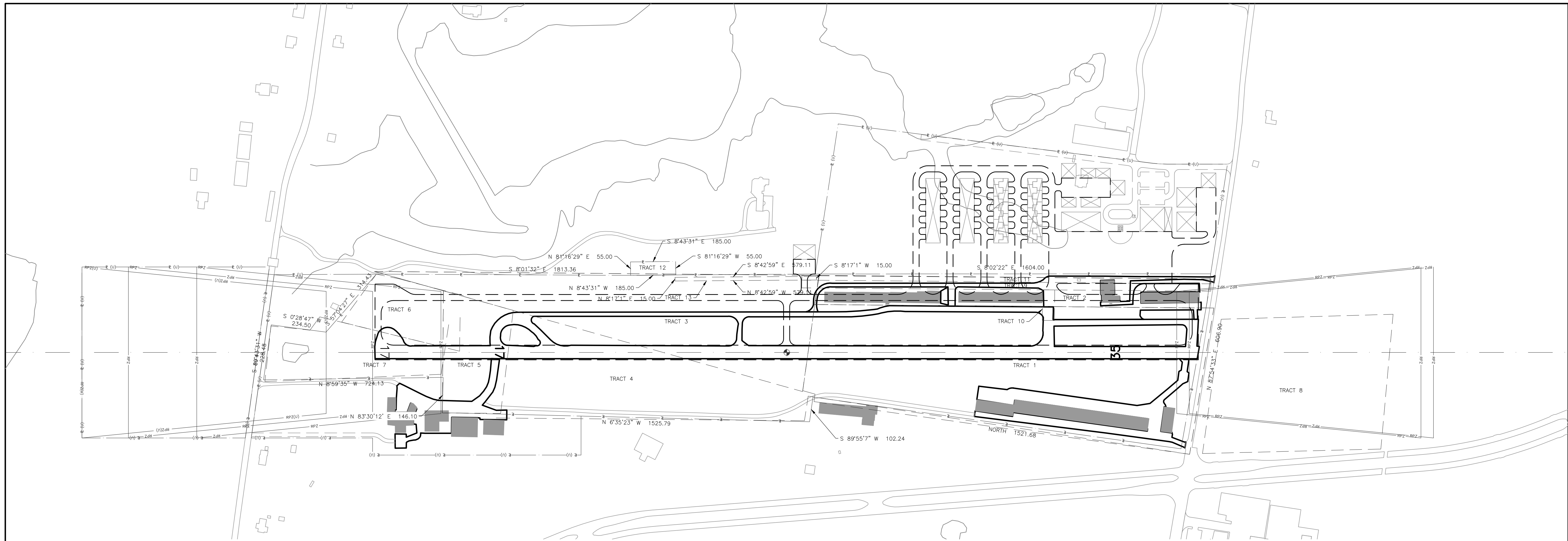
- AIRPORT OPERATIONS PROTECTED AREA
- TERMINAL DEVELOPMENT (E)
- RUNWAY PROTECTION AREA
- TERMINAL DEVELOPMENT (U)
- THROUGH-THE-FENCE HANGAR AREA
- AVIGATION ESEMENT (U)
- FUTURE TENANT DEVELOPMENT AREA



<p><b>TEXAS DEPARTMENT OF TRANSPORTATION AVIATION DIVISION</b></p> <p>ALP APPROVED ACCORDING TO FAA AC 150/5300-13A CHANGE 1 PLUS THE REQUIREMENTS OF A FAVORABLE ENVIRONMENTAL FINDING AND FAA NRA STUDY PRIOR TO THE START OF ANY LAND ACQUISITION OR CONSTRUCTION ON AIRPORT PROPERTY.</p> <p>COPYRIGHT 2014 TXDOT AVIATION DIVISION, ALL RIGHTS RESERVED.</p> <p>DAVID FULTON, DIRECTOR, AVIATION DIVISION _____ DATE _____</p>	<p><b>AIRPORT SPONSOR</b></p> <p>CURRENT AND FUTURE DEVELOPMENT DEPICTED ON THIS ALP IS APPROVED AND SUPPORTED BY AIRPORT SPONSOR</p> <p>SPONSOR ACKNOWLEDGES APPROVAL OF ALP BY TXDOT DOES NOT CONSTITUTE A COMMITMENT TO FUNDING.</p> <p>_____ SIGNATURE _____ DATE _____</p> <p>TITLE, AIRPORT SPONSOR'S REPRESENTATIVE _____</p>
<p>PREPARED BY:</p> <p><b>GARVER</b>  GARVER, LLC. 3010 GAYLORD PKWY, #190 FRISCO, TX 75034 (972) 377-7480 (972) 377-8380 FAX</p>	<p>PLH _____ SEPTEMBER 2014 DESIGNED BY DATE</p> <p>JAH _____ SEPTEMBER 2014 DRAWN BY DATE</p>

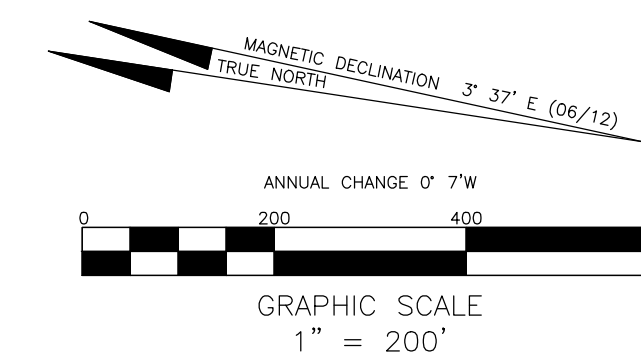
**LAND USE DRAWING**  
RALPH M. HALL MUNICIPAL AIRPORT  
ROCKWALL, TEXAS (F46)






AIRPORT PROPERTY DATA TABLE

TRACT	ACRES	TITLE	GRANTOR/REMARKS	COUNTY RECORD VOL./PAGE	DATE	FUNDING
1	17.99	FEE SIMPLE	ROY L. COLE	VOL. 53 / PG. 47	10/20/55	
2	4.40	FEE SIMPLE	DALROCK CORPORATION	VOL. 169 / PG. 51	10/09/67	
3	9.60	FEE SIMPLE	ROY L. COLE	VOL. 53 / PG. 48	10/01/55	
4	7.76	FEE SIMPLE	W.L. DUDLEY & CATHERINE DUDLEY	VOL. 53 / PG. 250	1/17/56	
5	2.84	FEE SIMPLE	ROY L. COLE	VOL. 53 / PG. 48	10/20/55	
6	1.75	FEE SIMPLE	WILLIAM A. CURFMAN & GLADYS CURFMAN	VOL. 87 / PG. 525	4/21/69	
7	3.70	FEE SIMPLE	WILLIAM A. CURFMAN & GLADYS CURFMAN	VOL. 87 / PG. 526	4/21/69	
8	9.04	EASEMENT	F.B. ATHEY & RUBY ATHEY	VOL. 87 / PG. 381	6/20/69	
9	1.92	EASEMENT	CITY OF ROCKWALL	VOL. XX / PG. 627	10/09/64	
10	0.14	EASEMENT	CITY OF ROCKWALL	VOL. XX / PG. 627	10/09/64	
11	0.77	EASEMENT	HAROLD B. YOUNGER & ROBERT H. BURKS	VOL. 71 / PG. 140	10/02/64	
12	0.234	EASEMENT	MICHAEL L. PEOPLES	VOL. 5118 / PG. 239	1/18/11	
13	0.199	EASEMENT	RALPH M. HALL MUNICIPAL AIRPORT	VOL. 5118 / PG. 239	7/20/11	



<p><b>TEXAS DEPARTMENT OF TRANSPORTATION AVIATION DIVISION</b></p> <p>ALP APPROVED ACCORDING TO FAA AC 150/5300-13A CHANGE 1 PLUS THE REQUIREMENTS OF A FAVORABLE ENVIRONMENTAL FINDING AND FAA NRA STUDY PRIOR TO THE START OF ANY LAND ACQUISITION OR CONSTRUCTION ON AIRPORT PROPERTY.</p> <p>COPYRIGHT 2014 TxDOT AVIATION DIVISION, ALL RIGHTS RESERVED.</p>		<p><b>AIRPORT SPONSOR</b></p> <p>CURRENT AND FUTURE DEVELOPMENT DEPICTED ON THIS ALP IS APPROVED AND SUPPORTED BY AIRPORT SPONSOR</p> <p>SPONSOR ACKNOWLEDGES APPROVAL OF ALP BY TxDOT DOES NOT CONSTITUTE A COMMITMENT TO FUNDING.</p>	
<p>DAVID FULTON, DIRECTOR, AVIATION DIVISION</p> <p>DATE</p>	<p>SIGNATURE</p> <p>DATE</p>	<p>TITLE, AIRPORT SPONSOR'S REPRESENTATIVE</p>	
<p>PREPARED BY:</p> <p><b>GARVER</b></p>		<p>GARVER, LLC. 3010 GAYLORD PKWY, #190 FRISCO, TX 75034 (972) 377-7480 (972) 377-8380 FAX</p>	
<p>PLH DESIGNED BY</p>		<p>SEPTEMBER 2014 DATE</p>	
<p>JAH DRAWN BY</p>		<p>SEPTEMBER 2014 DATE</p>	
<p>PROPERTY MAP RALPH M. HALL MUNICIPAL AIRPORT ROCKWALL, TEXAS (F46)</p>			
			 Aviation Division
<p>SHEET 6 OF 6</p>			